

ELLIX Printer Series Windows Driver & Installer

User Guide

All specifications are subject to change without notice.



SAM4S

Contents

Programming

CHAPTER 1. Getting Started	3
1.1. Overview	4
1.2. Operating Environment	5
1.3. Requirements	5
1.4. Preparations	5
CHAPTER 2. Installation of ELLIX printer	7
2.1. Verify interface type of ELLIX printer	8
2.2. Installing a Serial printer	10
2.3. Installing a Parallel printer	12
2.4. Installing an USB printer	14
2.5. Installing an USB to Serial printer	19
2.6. Installing an Ethernet printer	24
2.7. Checking installed printer	26
CHAPTER 3. Uninstallation of ELLIX printer	28
3.1. Uninstalling printer(s)	29
3.2. Remain information	31
CHAPTER 4. Specifications of ELLIX printer	32
4.1. Printer fonts	33
4.2. Printer resolutions & Paper sizes	36
CHAPTER 5. Properties of ELLIX Printer	37
5.1. Printer Device Control	38
5.2. Additional configurations	39
CHAPTER 6. Troubleshooting	41
6.1. Installation troubleshooting	42
6.2. Uninstallation troubleshooting	46
6.3. Printing troubleshooting	48
APPENDIX. Testing for ELLIX printer driver using the WordPad	51

CHAPTER 1.

Getting Started

- 1.1. Overview
- 1.2. Operating Environment
- 1.3. Requirements
- 1.4. Preparations



Getting Started

1.1. Overview

This document contains how to install/uninstall an ELLIX printer with an interface and contains how to configure an ELLIX printer.

To install a printer, refer follows:

1. Verify interface of ELLIX printer (p.8).
2. Install proper ELLIX printer driver.
 - 1) In case of a serial printer (p.10).
 - 2) In case of a parallel printer (p.12).
 - 3) In case of an USB printer (p.14).
 - 4) In case of an USB to Serial printer (p.19).
 - 5) In case of an Ethernet printer (p.24).
3. Make sure installed printer is properly works (p.26).

To uninstall a printer, refer (p.29).

The ELLIX printer driver installer (V1.9.x or above) provides follows models:


1. ELLIX10 (32bit only)
2. ELLIX20 (32bit only)
3. ELLIX20II (32bit / 64bit)
4. ELLIX30/45 (32bit / 64bit)
5. ELLIX40/45 (32bit / 64bit)
6. ELLIX40BlackMark (32bit only)

The ELLIX printer driver installer is supported English and Korean.

1.2. Operating Environment

X86 (32bit)	WEPOS, POSReady2009, Windows XP Pro, Windows Vista, Windows 7, Windows 8
X64 (64bit)	Windows XP Pro, Windows Vista, Windows 7, Windows 8 (WEPOS, [[POSReady2009 doesn't provide the x64)

1.3. Requirements

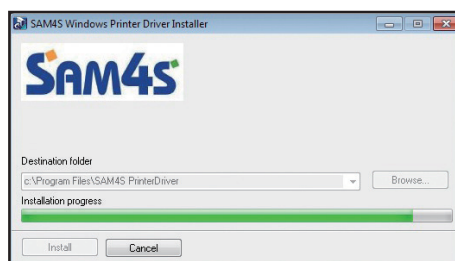
 **Warning :** This requirement should be satisfied for using an ELLIX printer.

- To install/uninstall a printer, 'Net framework 3.0' or above should have installed.
- To install an ELLIX printer properly, please make sure any related hardware works fine and interface of printer is well connected.

1.4. Preparations

Preparations for using the ELLIX windows driver installer:

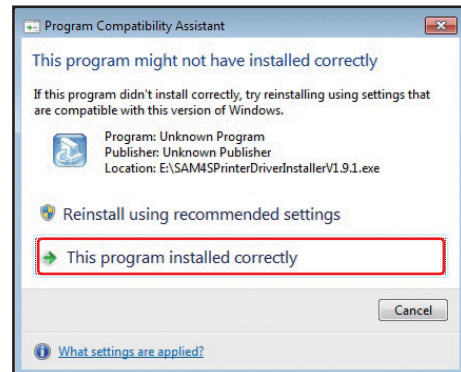
1. Double click the provided executable file so that files for the ELLIX windows driver installer is extracting to 'Program Files\SAM4S PrinterDriver' folder for a 32bit OS.
For a 64bit OS, the files are extracting to 'Program Files [x86]\SAM4S PrinterDriver' folder.



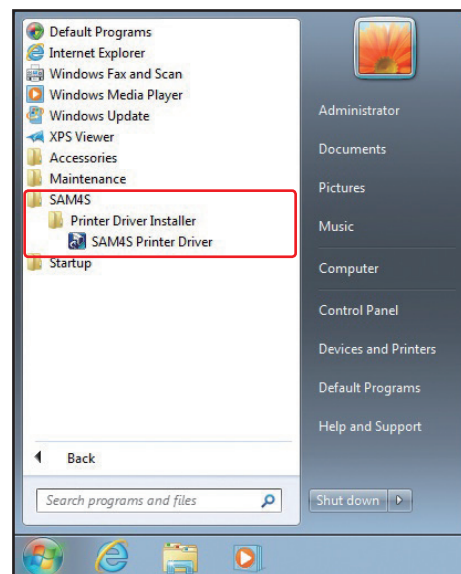
1.4. Preparations

2. This executable file is the 'WinRAR 32bit executable-extracting' file so compatibility message can be displayed on a 64bit OS.

If following message is shown, click 'This program installed correctly' to progress that will not affect any program or system.



3. The ELLIX windows driver installer will be started automatically after extracting files.
4. You can execute the ELLIX printer driver installer through shortcut that is on the 'Program Menu'. Please refer below for detail.



CHAPTER 2.

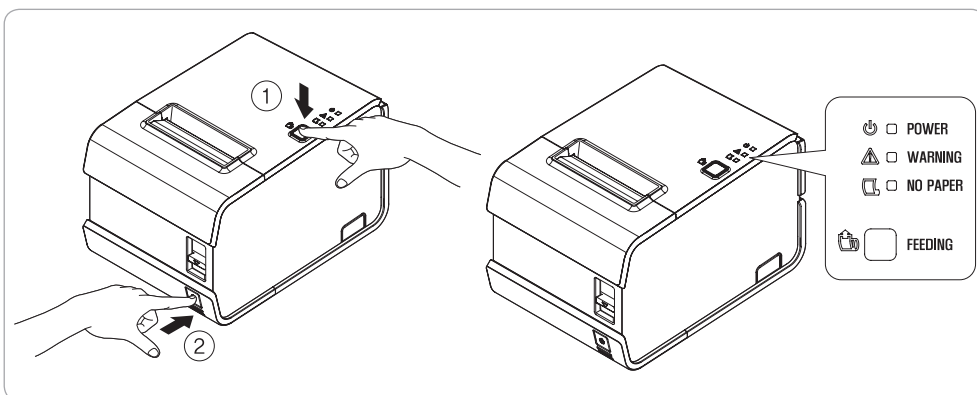
Installation of ELLIX printer

- 2.1. Verify interface type of ELLIX printer
- 2.2. Installing a serial printer
- 2.3. Installing a parallel printer
- 2.4. Installing an USB printer
- 2.5. Installing an USB to serial printer
- 2.6. Installing an Ethernet printer
- 2.7. Checking installed printer

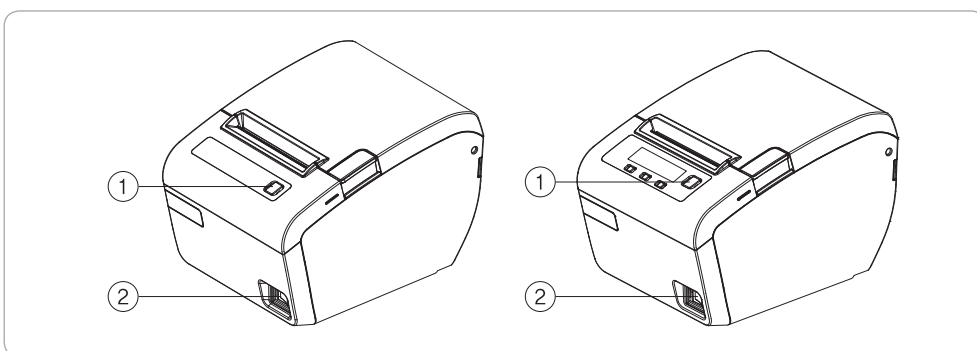
2.1. Verify interface type of ELLIX printer

Checks interface of printer from the 'self-test'. The self-test checks the following:

1. Make sure paper roll has been installed properly.
2. Turn on the power while holding down the FEED button. The self-test begins.



pic1) ELLIX20 / ELLIX20II



pic2) ELLIX30 / ELLIX40 / ELLIX35 / ELLIX45

2.1. Verify interface type of ELLIX printer

3. The self-test prints the current printer status, which provides the control ROM version and the printer setting.
4. After printing the current printer status, self-test printing will print the following and pause (The paper LCD / the LCD light blinks).
5. Press the FEED button to continue printing. The printer prints a pattern using the built-in character set.
6. The self-test automatically ends and cuts the paper after printing the following.

**** End Self-Test ****

7. The printer is ready to receive data as soon as it completes the self-test.
8. You can find interface type of ELLIX printer from the self-test as following.

Interface list

- USB-I INTERFACE for 'SERIAL /USB-I CONNECTION'
- USB-II INTERFACE for 'USB-II CONNECTION'
- PARALLEL INTERFACE for 'PARALLEL CONNECTION'
- Ethernet-II INTERFACE for 'ETHERNET CONNECTION'
- WIRELESS LAN (WLAN) INTERFACE for 'ETHERNET CONNECTION'
- SERIAL (RS-232C) INTERFACE - 25 pin for 'SERIAL /USB-I CONNECTION'
- SERIAL/WIRELESS INTERFACE - 9 pin for 'SERIAL /USB-I CONNECTION'

SAM4S ELLIX30

VERSION STD 1.02
PGM CHECKSUM : 3B51

PRINTING SPEED : 180mm/sec

SERIAL (RS-232C) INTERFACE

BAUD RATE : 115200 BPS
 PARITY : NONE
 DATA BITS : 8 BITS
 STOP BIT : 1 BIT
 HANDSHAKING : DTR/DSR
 RECEIVE BUF SIZE : 4 Kbytes
 EMULATION : EPSON
 USE KP BELL : NO
 AUTO-CUTTER : Enable
 PRINT DENSITY :
 LIGHT[1 2 3 4] DARK

■

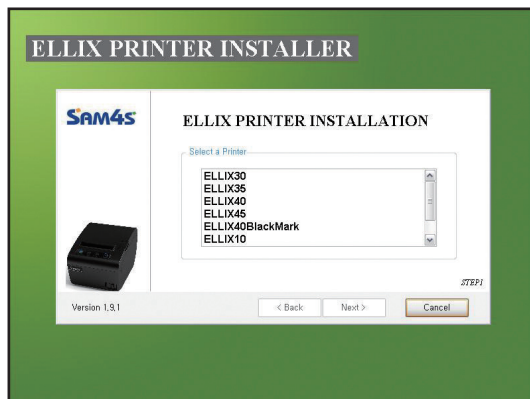
DIP S/W status (memory S/W 1, 2)
Memory DIP switch Report

DIP SW1	1	2	3	4	5	6	7	8
ON	■	■	■	■	■	■	■	■
OFF	■	■	■	■	■	■	■	■

DIP SW2	1	2	3	4	5	6	7	8
ON	■	■	■	■	■	■	■	■
OFF	■	■	■	■	■	■	■	■

2.2. Installing a Serial printer

1. Selecting a printer that will be installed.

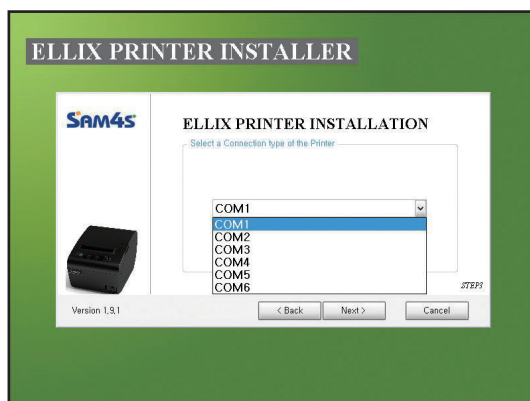


2. Selecting the 'SERIAL / USB-I CONNECTION'.



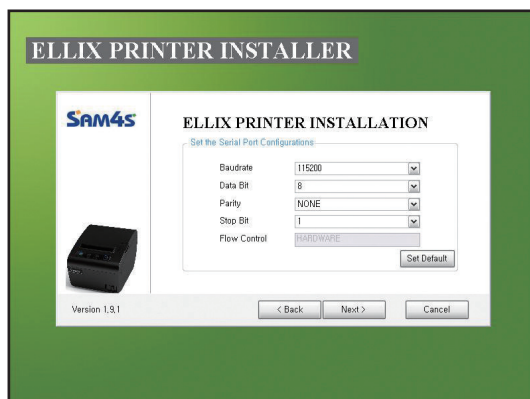
3. Selecting a port.

- If you don't have a serial port on your system, you can't progress further. For solution of this issue, please refer p.42.

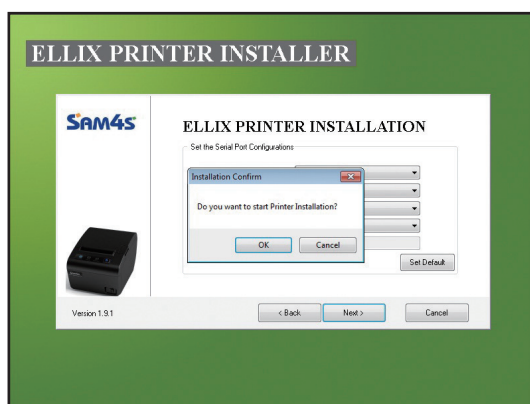


2.2. Installing a Serial printer

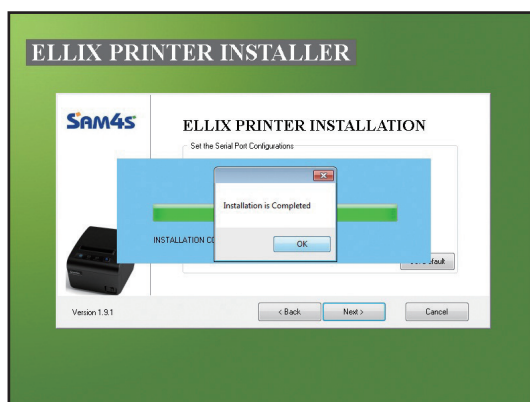
4. Configuring the selected port.



5. Confirming installation.



6. Installation completed.

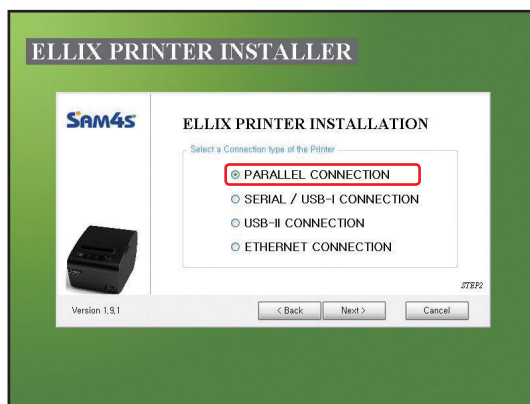


2.3. Installing a Parallel printer

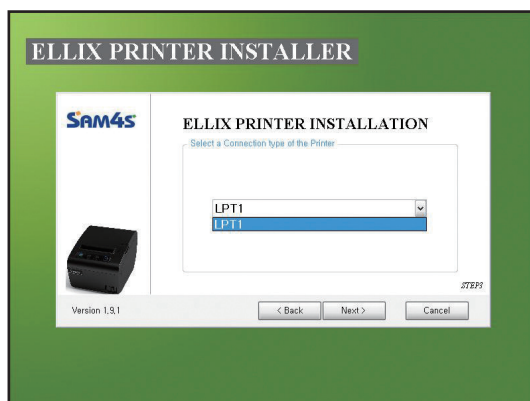
1. Selecting a printer that will be installed.



2. Selecting the 'PARALLEL CONNECTION'.

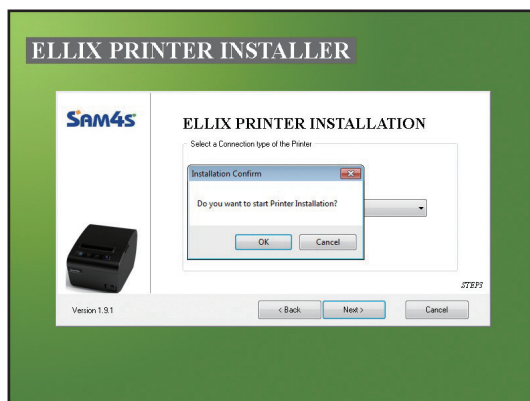


3. Selecting a port.
 - If you don't have a parallel port on your system, you can't progress further. For solution of this issue, please refer p.44.

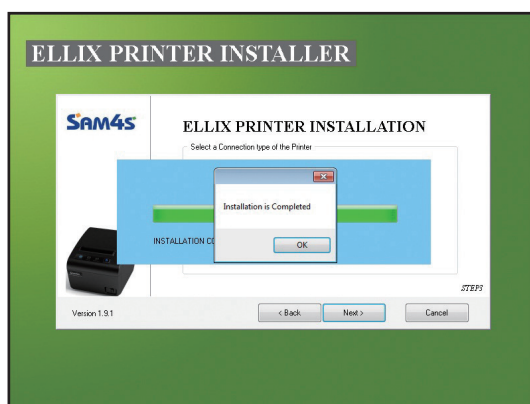


2.3. Installing a Parallel printer

4. Confirming installation.



5. Installation completed.



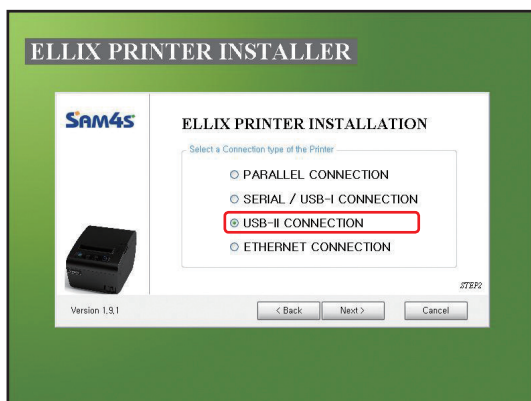
2.4. Installing an USB printer

Warning: Before finishing installation of USB printer, printer should not be connected with PC

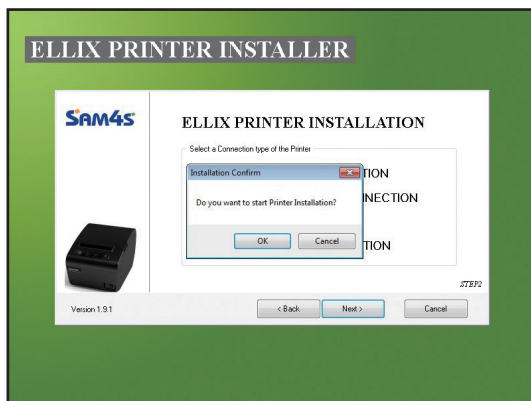
1. Selecting a printer that will be installed.



2. Selecting the 'USB-II CONNECTION'.



3. Confirming installation.



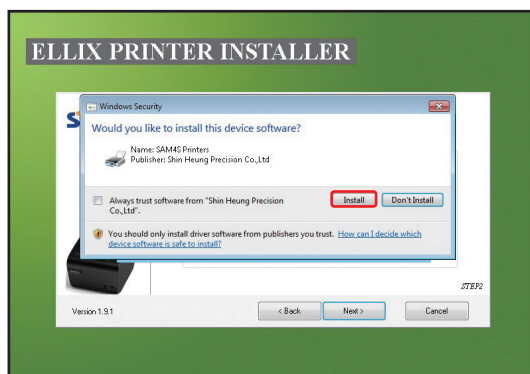
2.4. Installing an USB printer

4. Confirming security check.

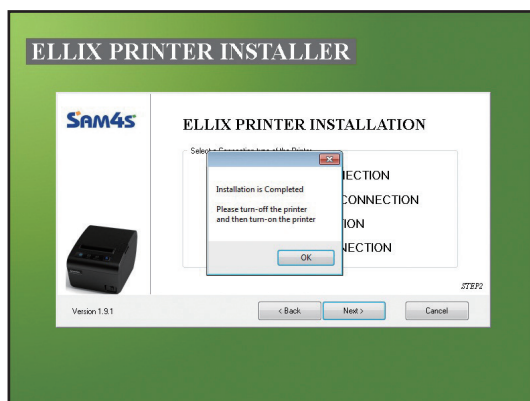
- In case of windows XP



- In case of windows vista or above
 - » Once you check the 'Always trust software ...' and click the install, the Windows Security message will not display any more.



5. Driver installation completed.



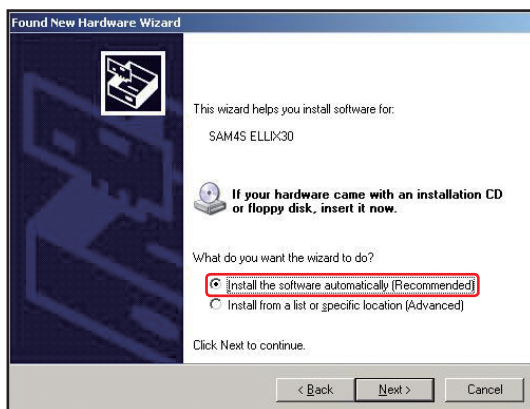
2.4. Installing an USB printer

6. Connecting printer so that the printer is installing.

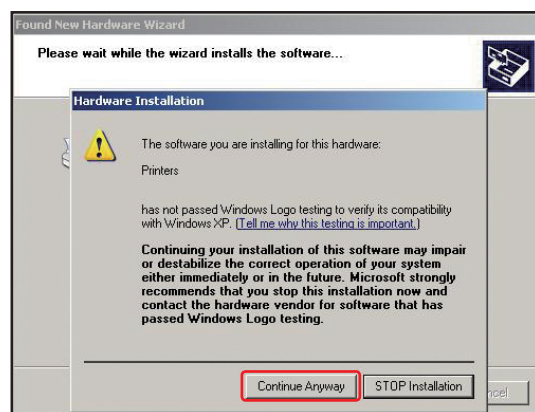
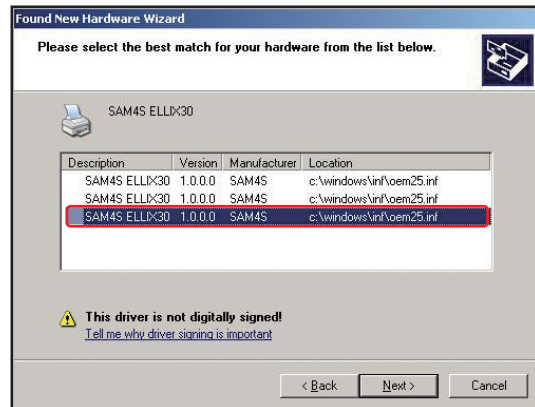
- In case of windows XP
 - » Notification of connection.



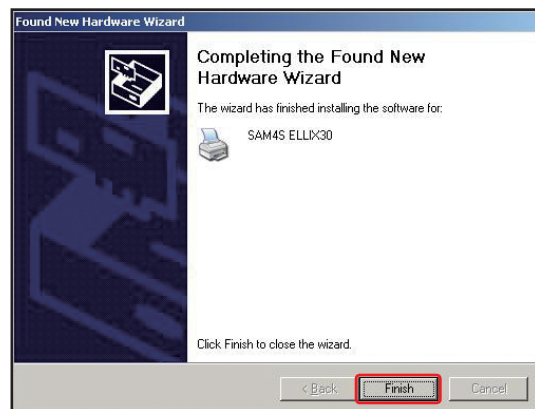
- » Hardware Wizard for the USB-II.



2.4. Installing an USB printer

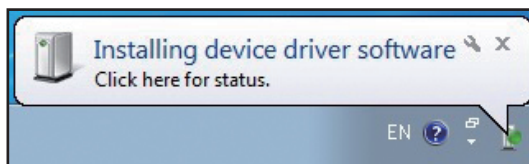


» Installation complete.

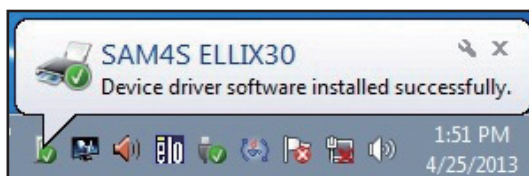


2.4. Installing an USB printer

- In case of windows vista or above
 - » Notification of connection.
OS will setup the printer automatically.



- » Installation complete.



2.5. Installing an USB to Serial printer

Warning: Before finishing installation of printer, printer should not be connected with PC

1. Selecting a printer that will be installed.

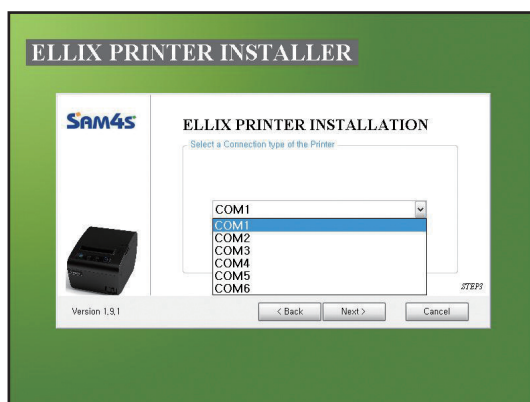


2. Selecting the 'SERIAL / USB-I CONNECTION'.



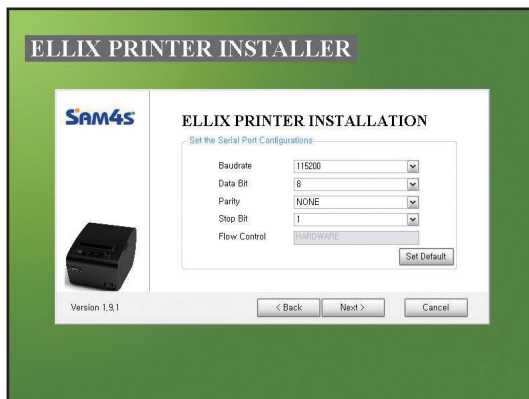
3. Selecting a port.

- If you already installed USB to Serial driver, you can select the installed port for printer driver.

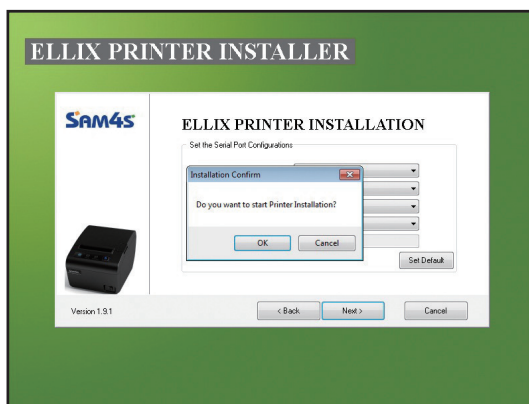


2.5. Installing an USB to Serial printer

4. Configurations of selected port.



5. Confirming installation.



6. Installation completed.



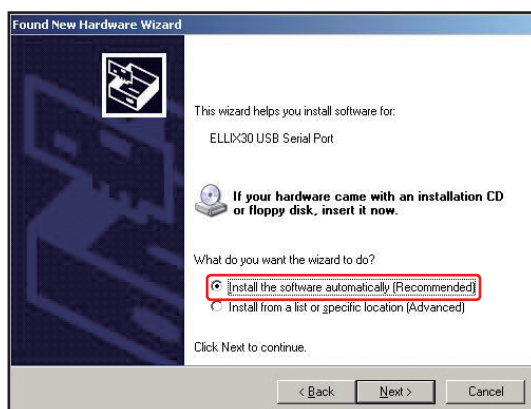
2.5. Installing an USB to Serial printer

7. Connecting printer so that 'USB to serial' interface is installing.

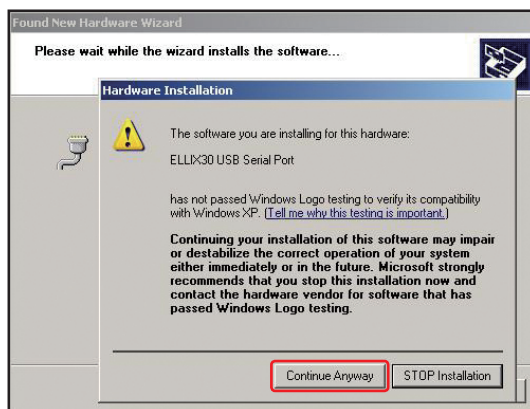
- In case of windows XP
 - » Notification of connection.



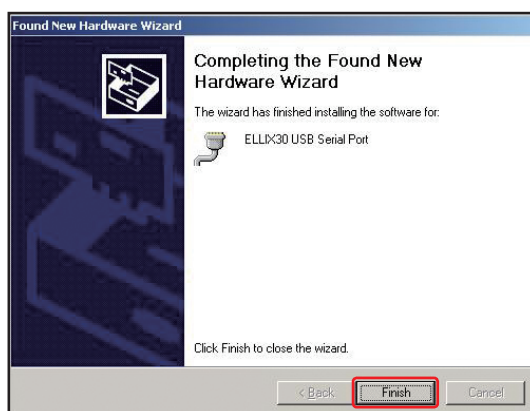
- » Hardware Wizard for the USB-II.



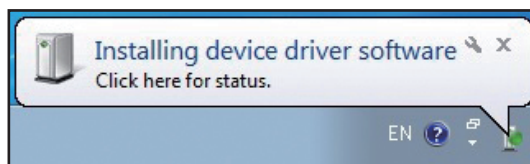
2.5. Installing an USB to Serial printer



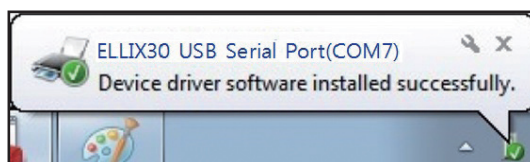
- Installation for 'USB to serial' is completed.



- In case of windows vista or above
 - » Notification of connection.

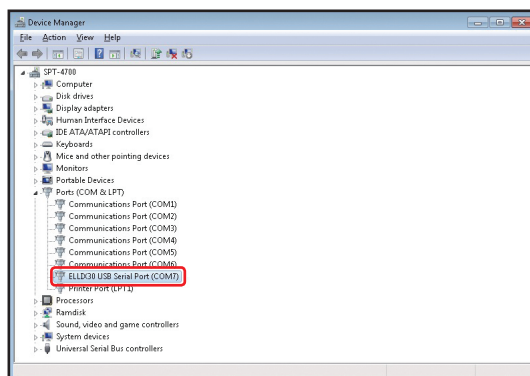


- » OS will setup the 'USB to serial' interface automatically.

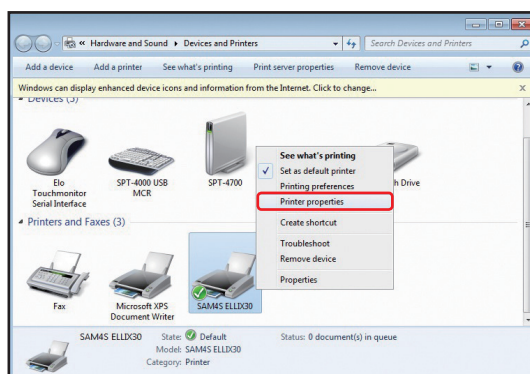


2.5. Installing an USB to Serial printer

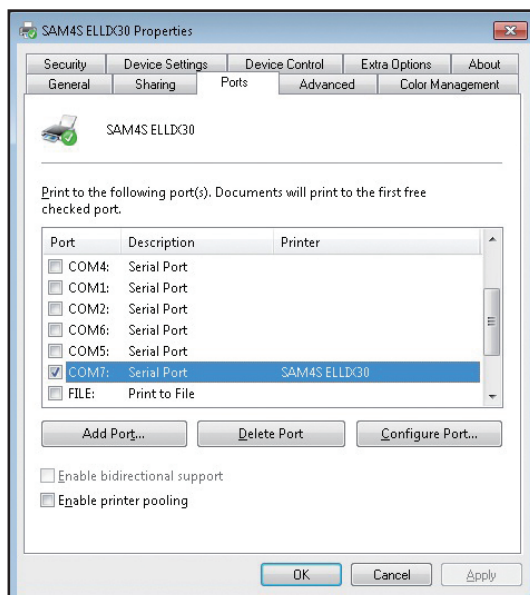
8. Checking the installed port of 'USB to serial' from Device Control.



9. Restart system to complete installation of 'USB to serial' port.
10. Open properties of installed printer.



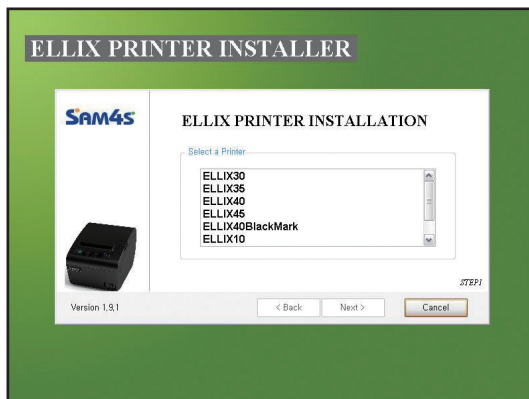
11. Changing port that is checked from step 8 by clicking name of port.



12. Installation Completed.

2.6. Installing an Ethernet printer

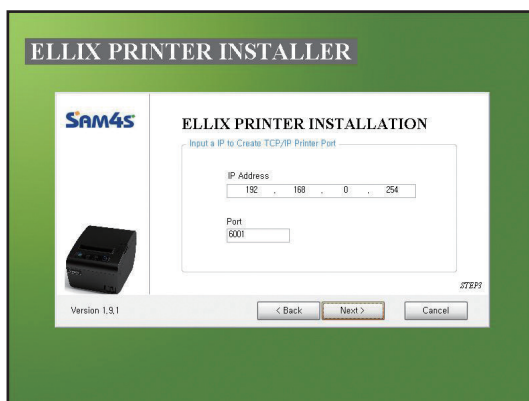
1. Selecting a printer that will be installed.



2. Selecting the 'ETHERNET CONNECTION'.

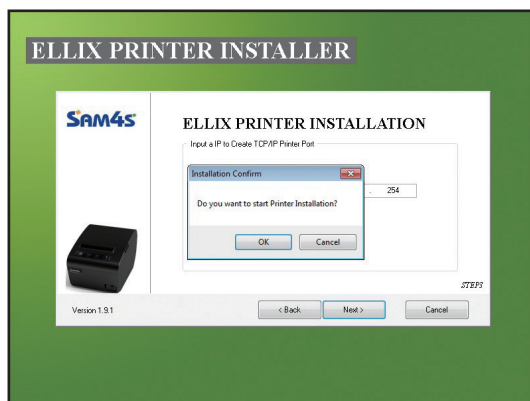


3. Configuration for TCP/IP.
 - Default Port of ELLIX printer: 6001

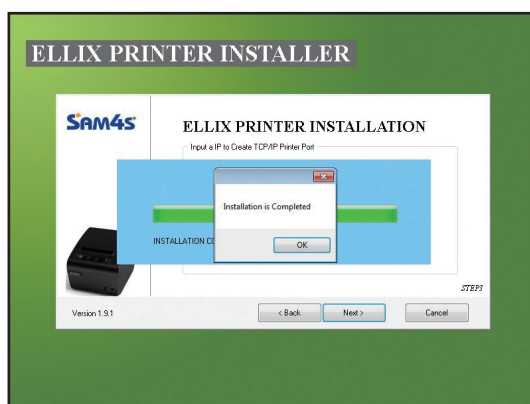


2.6. Installing an Ethernet printer

4. Confirming installation.



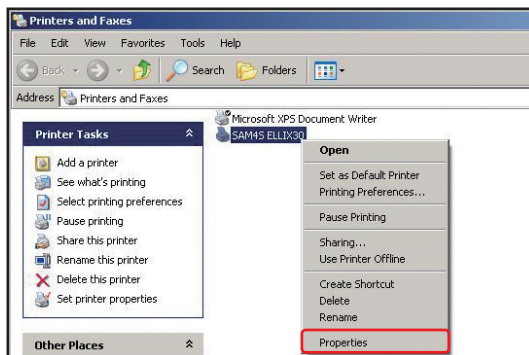
5. Installation completed.



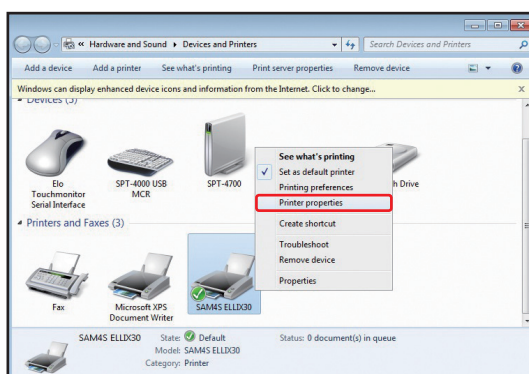
2.7. Checking installed printer

1. Checking installed printer.

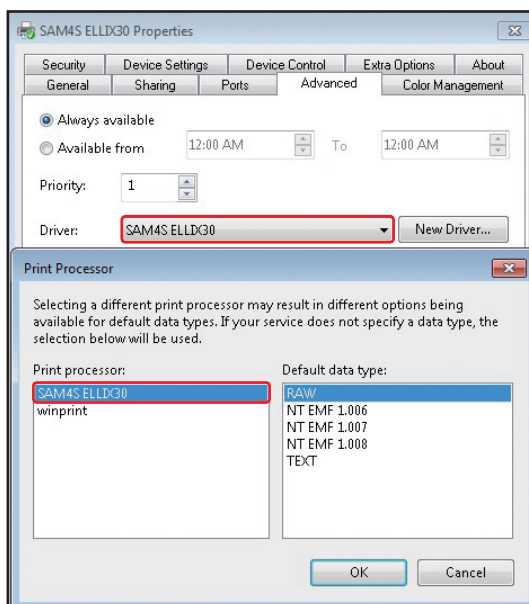
- In case of Windows XP.



- In case of Windows Vista or above.

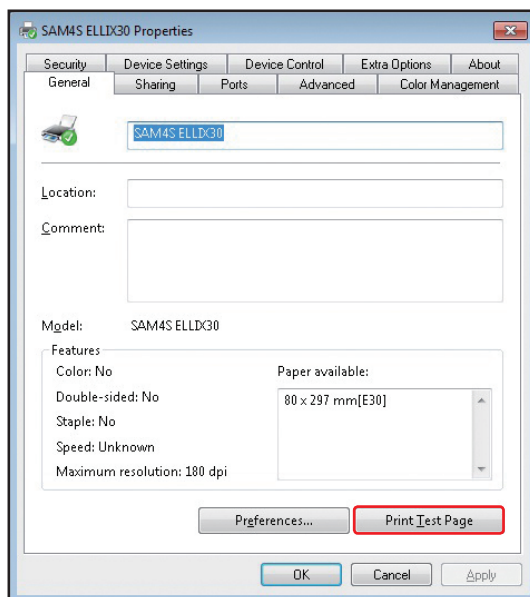


- ### 2. Verifying properties that are 'Driver' and 'Print Processor' of installed printer from the Advance tap.



2.7. Checking installed printer

3. Printing test page from the General tab and checking the printed paper.



CHAPTER 3.

Uninstallation of ELLIX printer

- 3.1. Uninstalling printer(s)
- 3.2. Remain information



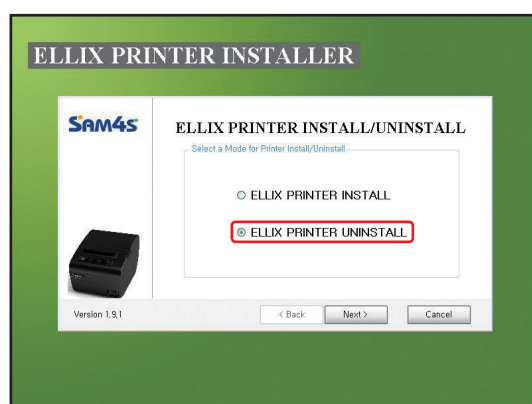
Uninstallation of ELLIX printer

3.1. Uninstalling printer(s)

1. There is two ways to start uninstallation.
 - 1) Starting from 'Add or Remove Program'.
 - 2) Starting from 'Program Menu'.

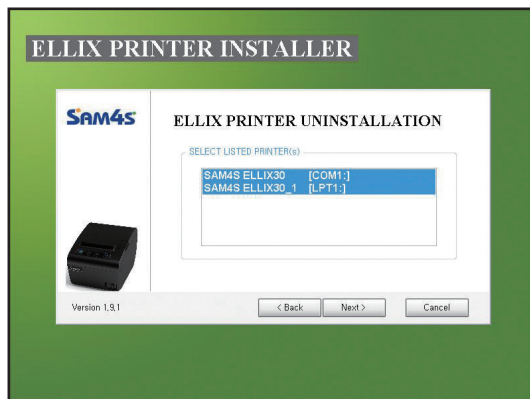
2. If there is an installed printer, printer installation / Uninstallation can make a choice.

'ELLIX Printer Uninstall' is selected as the default setting if you have an installed ELLIX printer. If the ELLIX printer installer doesn't show the dialog despite you have an installed printer, please refer p.47. Selecting the 'ELLIX Printer Uninstall'.

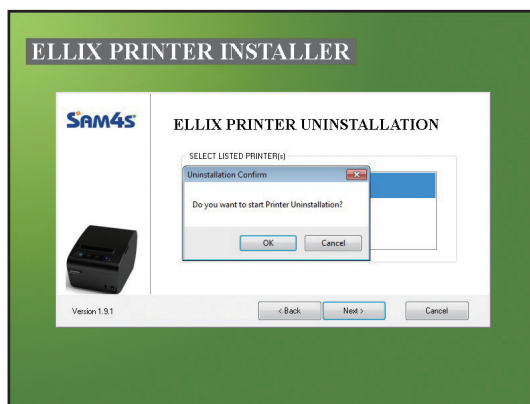


3.1. Uninstalling printer(s)

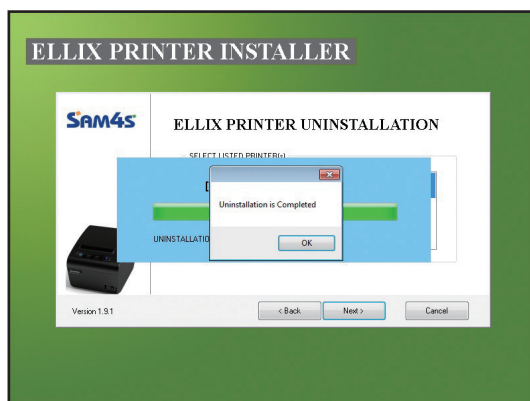
3. Selecting one or more printer that will be uninstalled.



4. Confirming uninstallation.

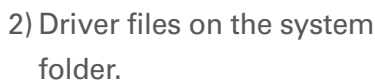


5. Uninstallation completed.



CHAPTER 3

1) ELLIX printer driver installer files.



CHAPTER 4.

Specifications of ELLIX printer

- 4.1. Printer fonts
- 4.2. Printer resolutions & Paper sizes



4.1. Printer fonts

These drivers support use of printer fonts as well as Windows fonts. Use of printer fonts permits faster printing. Available printer fonts are listed below.

“Built-in fonts of a printer” can be specified with the application programs. The “built-in fonts” are as follows.

- Printer Font (type A, Large)
- Printer Font (type B, Small)

The font names what the user can choose in to the application are as follows. 2 types of character-height can be chosen in each font. They are two kinds of the FontAXxX (Ext.) font and the FontAXxX. The character code of 128 bytes of 80H - FFH varies in the difference in these printer fonts. A FontAXxX font supports ANSI character code (Code Page 2: 850). And, a FontAXxX (Ext.) font supports IBM expansion character code (Code Page 0: 437). A FontAXxX (255) font supports space page. (Code Page: 255).

Printer Fonts			Character size(dot)	Sizes (point)
FontA 1x1	FontA 1x1 (Ext.)	FontA 1x1 (255)	FontA1x1 (12x24)	9.5
FontA 1x2	FontA 1x2 (Ext.)	FontA 1x2 (255)	FontA1x2 (12x48)	19
FontA 2x1	FontA 2x1 (Ext.)	FontA 2x1 (255)	FontA2x1 (24x24)	9.5
FontA 2x2	FontA 2x2 (Ext.)	FontA 2x2 (255)	FontA2x2 (24x48)	19
FontA 2x4	FontA 2x4 (Ext.)	FontA 2x4 (255)	FontA2x4 (24x96)	38.5
FontA 4x2	FontA 4x2 (Ext.)	FontA 4x2 (255)	FontA4x2 (48x48)	19
FontA 4x4	FontA 4x4 (Ext.)	FontA 4x4 (255)	FontA4x4 (48x96)	38.5
FontA 4x8	FontA 4x8 (Ext.)	FontA 4x8 (255)	FontA4x8 (48x192)	77
FontA 8x4	FontA 8x4 (Ext.)	FontA 8x4 (255)	FontA8x4 (96x96)	38.5
FontA 8x8	FontA 8x8 (Ext.)	FontA 8x8 (255)	FontA8x8 (96x192)	77

4.1. Printer fonts

FontB 1x1	FontB 1x1 (Ext.)	FontB 1x1 (255)	FontB1x1 (9x17)	7
FontB 1x2	FontB 1x2 (Ext.)	FontB 1x2 (255)	FontB1x2 (9x34)	13.5
FontB 2x1	FontB 2x1 (Ext.)	FontB 2x1 (255)	FontB2x1 (18x17)	7
FontB 2x2	FontB 2x2 (Ext.)	FontB 2x2 (255)	FontB2x2 (18x34)	13.5
FontB 2x4	FontB 2x4 (Ext.)	FontB 2x4 (255)	FontB2x4 (18x68)	27
FontB 4x2	FontB 4x2 (Ext.)	FontB 4x2 (255)	FontB4x2 (36x34)	13.5
FontB 4x4	FontB 4x4 (Ext.)	FontB 4x4 (255)	FontB4x4 (36x68)	27
FontB 4x8	FontB 4x8 (Ext.)	FontB 4x8 (255)	FontB4x8 (36x136)	54.5
FontB 8x4	FontB 8x4 (Ext.)	FontB 8x4 (255)	FontB8x4 (72x68)	27
FontB 8x8	FontB 8x8 (Ext.)	FontB 8x8 (255)	FontB8x8 (72x136)	54.5

Korean 1x1	Korean Version OS ONLY	--	9.5
Korean 1x2	Korean Version OS ONLY	--	19
Korean 2x1	Korean Version OS ONLY	--	9.5
Korean 2x2	Korean Version OS ONLY	--	19
Korean 2x4	Korean Version OS ONLY	--	38.5
Korean 4x2	Korean Version OS ONLY	--	19
Korean 4x4	Korean Version OS ONLY	--	38.5
Korean 4x8	Korean Version OS ONLY	--	77
Korean 8x4	Korean Version OS ONLY	--	38.5
Korean 8x8	Korean Version OS ONLY	--	77

Printer font for special function	Function	Size (font / dot)
FontControl	Open Drawer 1/2	(10 / 12 x 24)
	Cut receipt	
	Cut receipt(without paper feeding)	
	Justification(Left/Center/Right)	
	Output HT, Output LF, Output CR	
	Barcode printing	
	Print NV bit image	

4.1. Printer fonts

SAM4S ELLIX Printer can be used to execute a variety of special non-printing functions, as indicated in the table below. You can execute these functions by selecting the printer's special "FontControl" font and then sending the appropriate character code to the driver. (Note that you cannot use the "FontControl" font to print normal characters)

Character	Special Function
5	HT is output
6	LF is output
7	CR is output
a	Open Drawer 2 (50ms drive pulse width)
b	Open Drawer 2 (100ms drive pulse width)
c	Open Drawer 2 (150ms driver pulse width)
d	Open Drawer 2 (200ms drive pulse width)
e	Open Drawer 2 (250ms drive pulse width)
g	Cut Receipt (partial cut) without paper feeding
p	HRI characters are not added to the bar code
q	HRI character are added at the top of the bar code using Font A
r	HRI characters are added at the bottom of the bar code using Font A
s	HRI characters are added at the top of the bar code using Font B
t	HRI characters are added at the bottom of the bar code using Font B
w	Text is aligned left
x	Text is centered
y	Text is aligned right
A	Open Drawer 1 (50ms drive pulse width)
B	Open Drawer 1 (100ms drive pulse width)
C	Open Drawer 1 (150ms driver pulse width)
D	Open Drawer 1 (200ms drive pulse width)
E	Open Drawer 1 (250ms drive pulse width)
G	NV bit image No 1 is printed in the Normal mode
H	NV bit image No 2 is printed in the Normal mode
I	NV bit image No 3 is printed in the Normal mode
J	NV bit image No 4 is printed in the Normal mode
K	NV bit image No 5 is printed in the Normal mode
P	Cut Receipt (partial cut)
[NV bit image No 1 is printed in the Double Height Double Width mode
]	NV bit image No 2 is printed in the Double Height Double Width mode
^	NV bit image No 3 is printed in the Double Height Double Width mode
_	NV bit image No 4 is printed in the Double Height Double Width mode
`	NV bit image No 5 is printed in the Double Height Double Width mode

4.2. Printer resolutions & Paper sizes

- Resolutions

The resolution setting supported by SAM4S ELLIX printer is 180×180.

- Paper sizes

The paper sizes supported by SAM4S ELLIX printer are as follow.

- 80 × 3279 mm
- 80 × 297 mm
- 80 × 200 mm
- 80 × 160 mm
- 80 × 120 mm
- 80 × 80 mm
- 80 × 40 mm
- 58 × 3276 mm
- 58 × 297 mm

The following table shows the recommended margins for SAM4S ELLIX printer.

Refer to this table when setting margins from your printing applications.

Printer	Margins				Printer Area
	Left[mm]	Right[mm]	Top[mm]	Bottom[mm]	Width[mm]
SAM4S ELLIX	0	0	0	0	80

CHAPTER 5.

Properties of ELLIX Printer

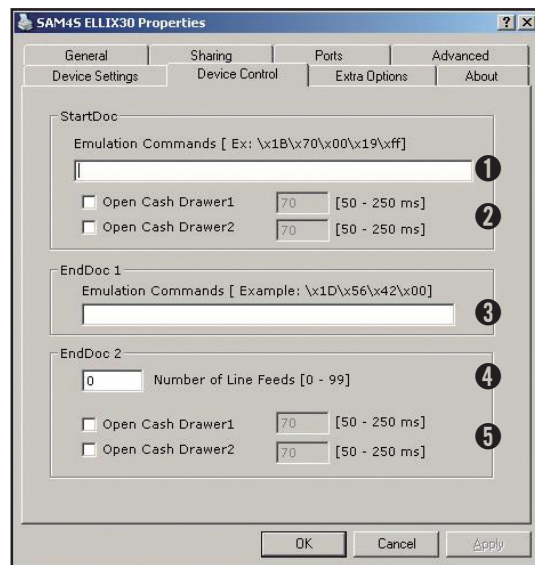
- 5.1. Printer Device Control
- 5.2. Additional configurations



Properties of ELLIX Printer

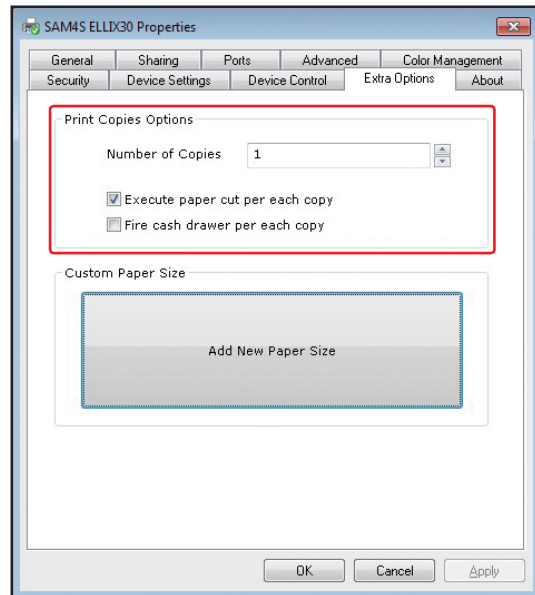
5.1. Printer Device Control

1. You can be entered a command you wanted to at the point of starting document.
Ex) `\x1B\x70\x00\x19\xff` = Open Drawer 1 (50ms drive pulse width)
2. You can fire cash drawer 1 or 2.
3. You can be entered a command you wanted to at the point of ending page.
Ex) `\x1D\x56\x42` = Cut Receipt, Type the command to cut.
4. This is where you enter the number of line feeds that will be done after a document is printed.
5. You can fire cash drawer 1 or 2.



5.2. Additional configurations

1. Configuration for printer copies



ELLIX printers (ELLIX20II or above) provide three options for printer copies.

- 1) Number of print copies.
- 2) Paper cut option.

Checking this option will execute paper cut per each copies.

- 3) Cash drawer fire option.

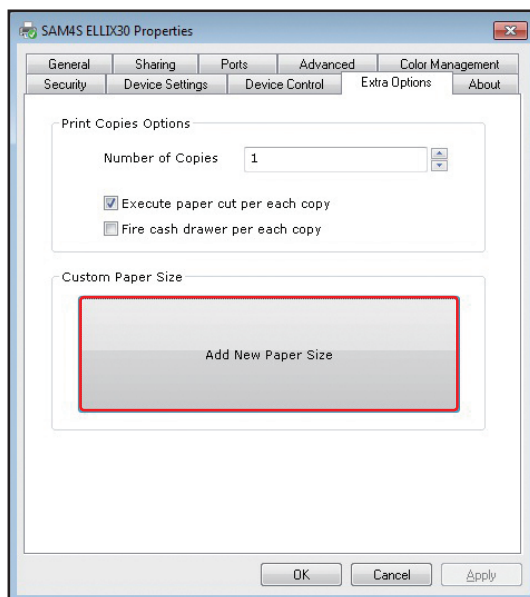
Checking this option will fire cash drawer per each copies.

5.2. Additional configurations

2. Configurations for printer papers.

ELLIX printers (ELLIX20II or above) provide the 'Add New paper Size' button for creating a custom paper size and modifying a paper size.

Clicking the button will open the 'Custom Paper Size' dialog.

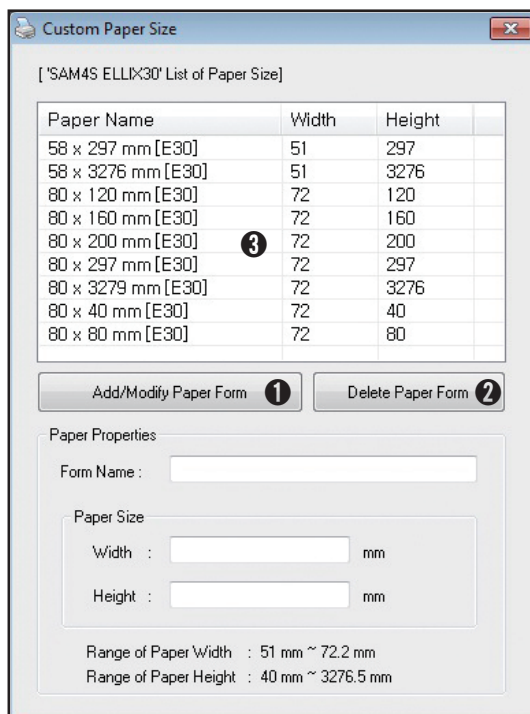


1. You can add or modify a paper form. The paper properties must be filled. If you want to make a new paper size, file the 'Form Name' that is not on the list and fill the paper size properties.

2. You can delete a selected paper form.

3. If you select an item from the list, paper properties of selected item that is a paper form will be filled automatically.

You can modify or delete the selected item.



CHAPTER 6.

Troubleshooting

- 6.1. Installation troubleshooting
- 6.2. Uninstallation troubleshooting
- 6.3. Printing troubleshooting

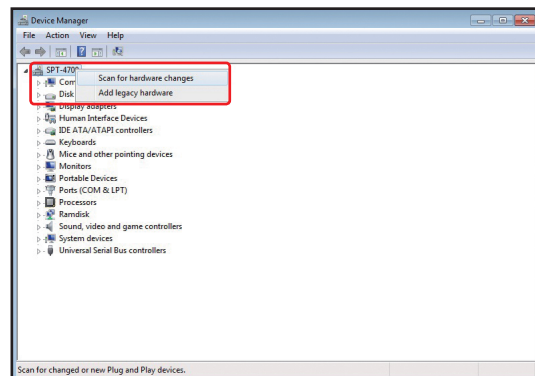
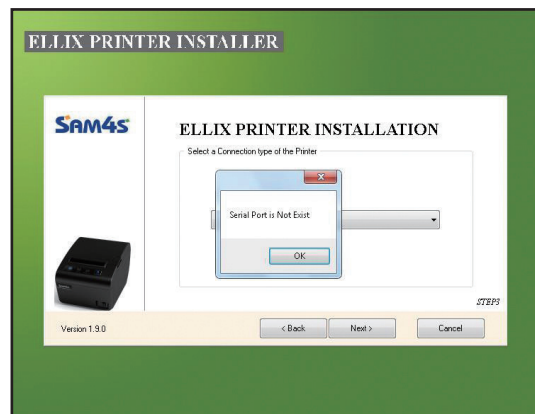


6.1. Installation troubleshooting

1. Not found a serial port.
If you don't have a serial port on your system, Installation for serial port is not possible.

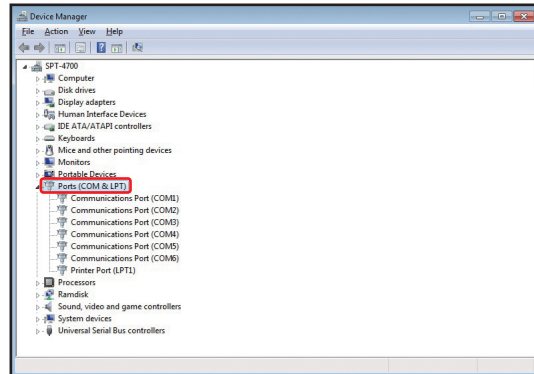
What you need to do is make sure whether system has a serial port or not from the 'Device Manager'

- 1) Scanning for hardware to make sure all of hardware is installed.



6.1. Installation troubleshooting

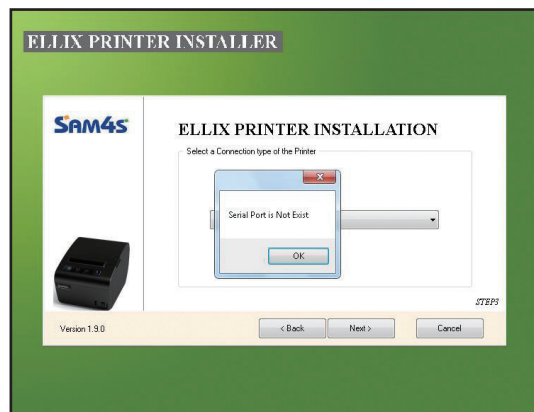
- 2) Checking 'COM (communications) Port' on the list.



- 3) If you don't have any 'COM Port' on the list, please ask assistance to hardware engineer of your system.

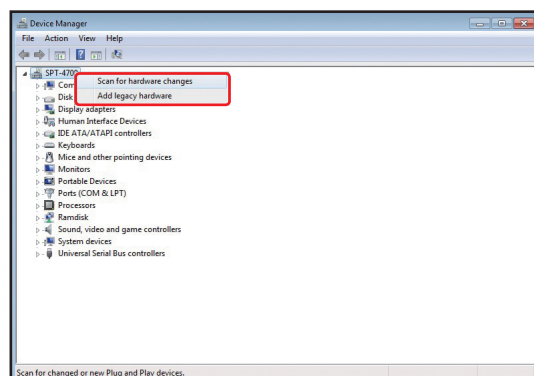
2. Not found a USB to serial port.

If you don't have a serial port including USB to serial port on your system, Installation for serial port is not possible.



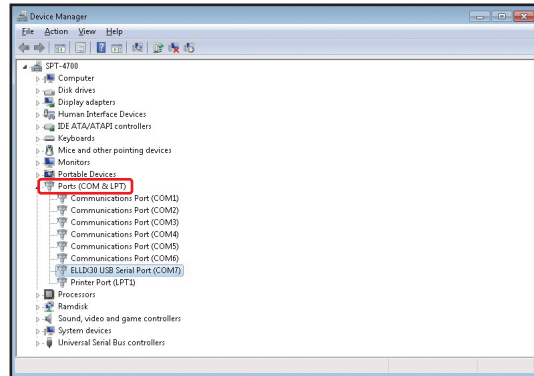
What you need to do is make sure whether system has a USB to serial port or not from the 'Device Manager'

- 1) Scanning for hardware to make sure all of hardware is installed.



6.1. Installation troubleshooting

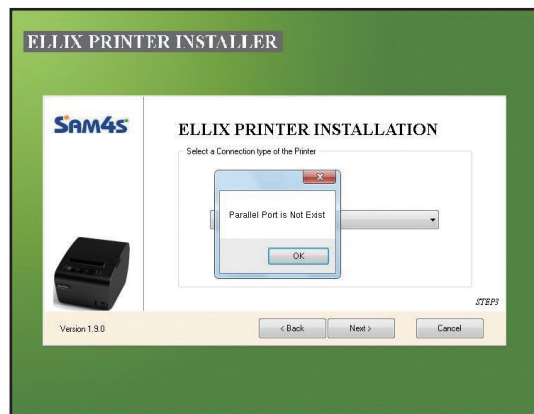
- 2) Checking 'COM (communications) Port' on the list.



- 3) If you don't have any 'ELLIX USB Serial Port' on the list, please refer 'Installing USB to serial printer' (p.19) to install an ELLIX USB to Serial printer.
- 4) If you have 'ELLIX USB Serial Port' on the list but the ELLIX printer installer doesn't show the port when you install a ELLIX printer, please re-boot your system to apply changes completely and try again.

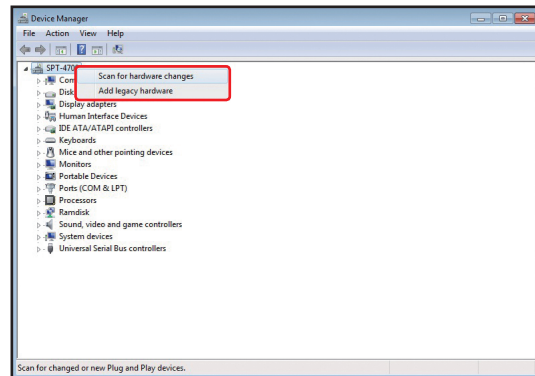
3. Not found a parallel port.
If you don't have a parallel port on your system, Installation for parallel port is not possible.

What you need to do is make sure whether system has a parallel port or not from the 'Device Manager'

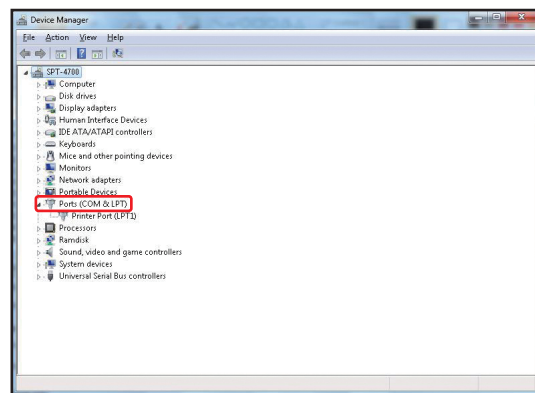


6.1. Installation troubleshooting

- 1) Scanning for hardware to make sure all of hardware is installed.



- 2) Checking 'LPT Port (Parallel Port)' on the list.



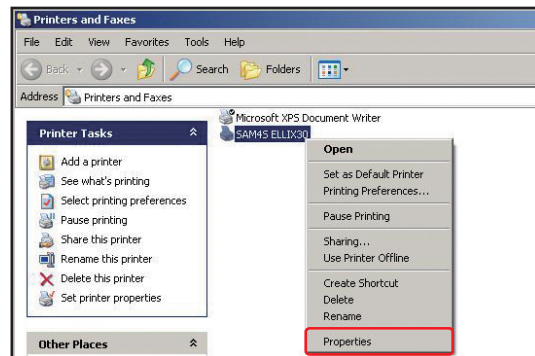
- 3) If you don't have any 'Printer Port' on the list, please ask assistance to hardware engineer of your system.

6.2. Uninstallation troubleshooting

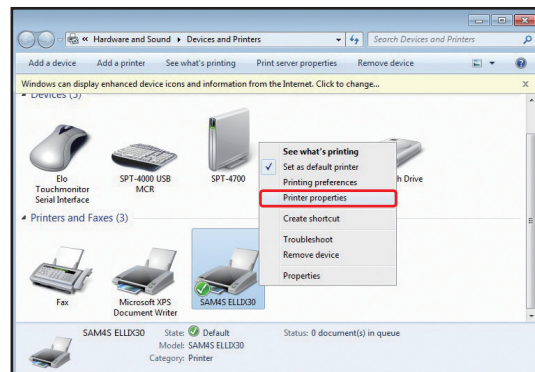
1. Unable to uninstall.

- 1) Make sure an ELLIX printer is installed from the 'Printers and Faxes'. Name of the installed ELLIX printer should be form as 'SAM4S ELLIXxx'.

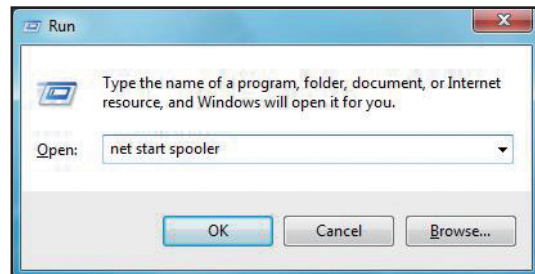
- In case of Windows XP.



- In case of Windows Vista or above.



- 2) If the list of 'Printers and Faxes' is not shown, execute 'net start spooler' from the 'Run'.
- To open 'Run' dialog, press the 'Windows Key' with 'R Key'.

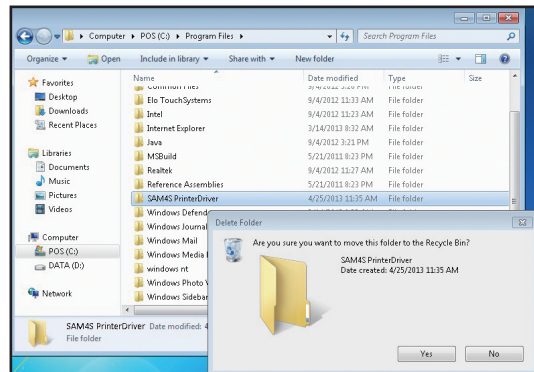


6.2. Uninstallation troubleshooting

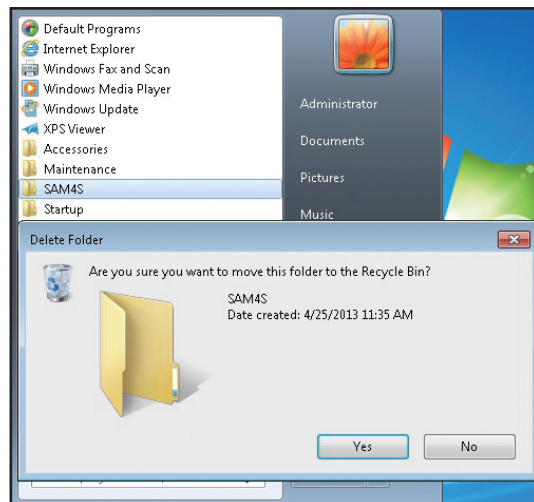
2. Uninstalling the ELLIX Printer Driver Installer.

1) Delete the installer files:

32bit OS - Root\
Program Files\SAM4S
PrinterDriver
64bit OS - Root\Program
Files(x86)\SAM4S
PrinterDriver



2) Delete the shortcut of the installer.

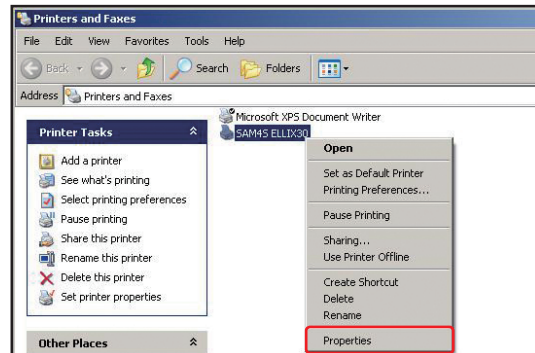


6.3. Printing troubleshooting

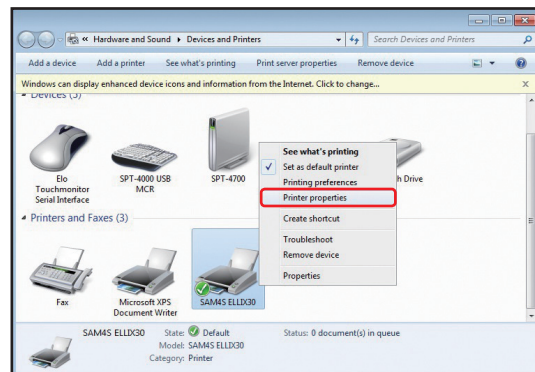
1. If printing for a document is not properly.

Open the 'Printer properties' from the 'Printers and Faxes'.

- In case of Windows XP.

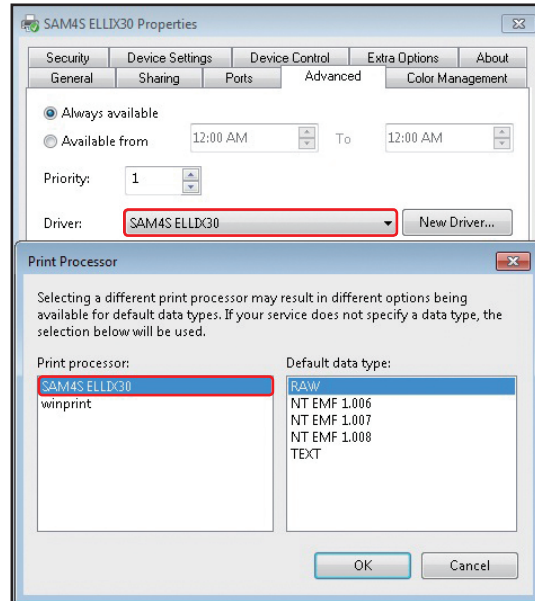


- In case of Windows Vista or above.

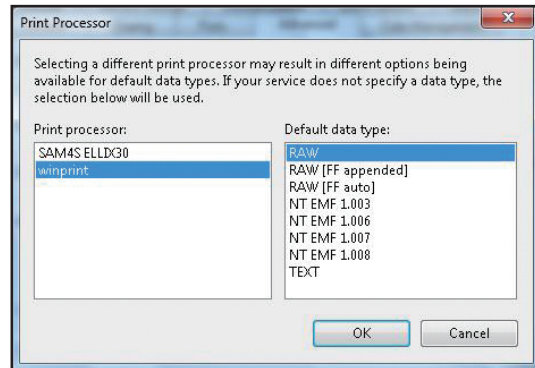


6.3. Printing troubleshooting

2. Verifying properties that are 'Driver' and 'Print Processor' of installed printer from the 'Advance' tap.

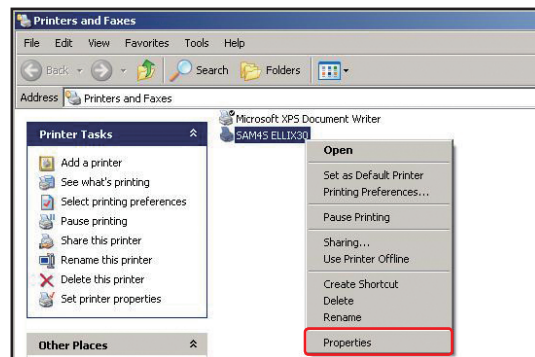


If the Print Processor is assigning the 'winprint', select the 'SAM4S ELLIXxx'.



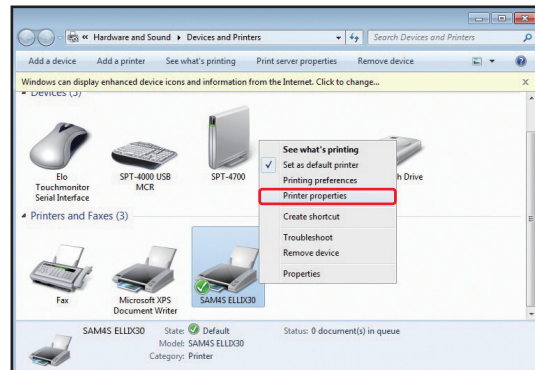
If installed ELLIX printer doesn't show on the list of printers.

- 1) Make sure an ELLIX printer is installed from the 'Printers and Faxes'.
- In case of Windows XP.

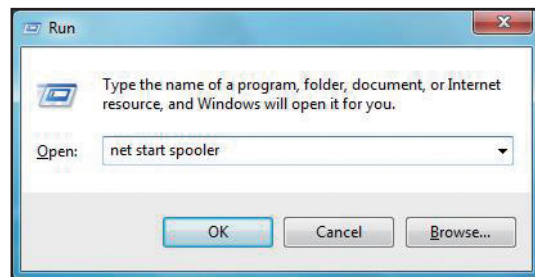


6.3. Printing troubleshooting

- In case of Windows Vista or above.



- 2) If the list of 'Printers and Faxes' is not shown, execute 'net start spooler' from the 'Run'.
- To open 'Run' dialog, press the 'Windows Key' with 'R Key'.



APPENDIX.

Testing for ELLIX printer driver using the WordPad



Testing for ELLIX printer driver using the WordPad

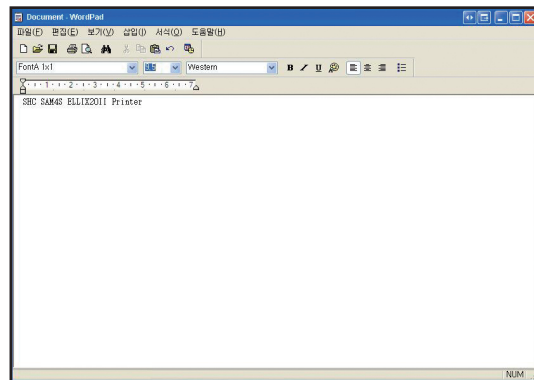
1. WordPad Environment

WordPad is more adequate to test printer than Microsoft Word. Make it sure that SAM4S ELLIX has been chosen as default printer and then go further with WordPad like below.

- Size / Resolution / Margins [Refer to p.36]

2. Printing Text

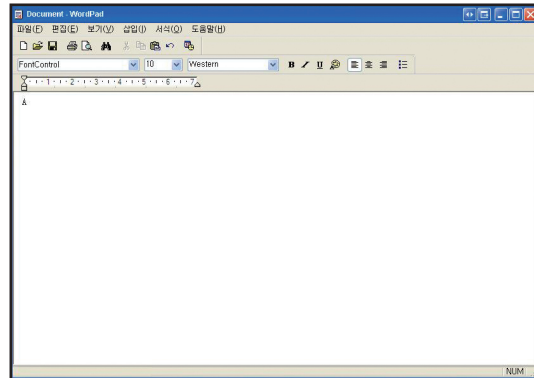
- 1) Select the font you wish to use from the font list.
 - 2) Select the font size you wish use from the font-size list.
 - 3) Type in some text into the WordPad text-input area.
 - 4) Open the File menu, and click on Print.
- ※ For fastest printing, select a printer font form the font list.



3. Opening the Cash Drawer

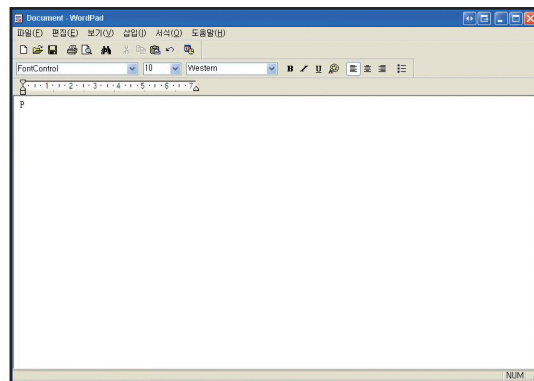
- 1) Select the "FontControl" font from the font list.
- 2) Set the font size to 10.
- 3) Type an "A" into the WordPad text-input area.
- 4) Open the File menu, and click on Print.

※ Clicking on Print will cause cash drawer #1 to open at a drive speed of 50ms. By changing the character that you input at Step 3, you can select different driver speed or open the other drawer.



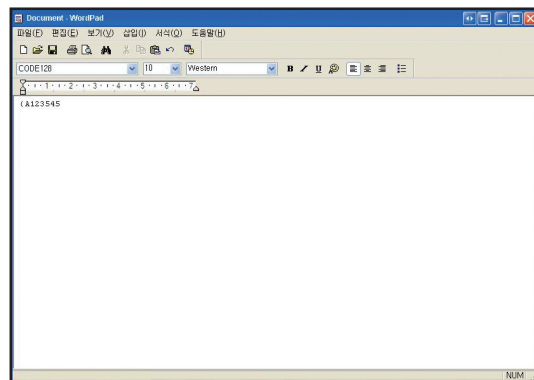
4. Cutting the Paper

- 1) Select the "FontControl" font from the font list.
- 2) Set the font size to 10.
- 3) Type in "P".
- 4) Open the File menu, and click on Print.



5. Bar Code Printing

- 1) Select the "Code128" font from the font list.
- 2) Set the font size to 10.
- 3) Type in an "{A123545"
- 4) Open the File menu, and click on Print.



ELLIX Printer Series Windows Driver & Installer

User Guide