
SAM4s ER-380 Series

PC Utility User's Manual



Central Cash Registers
410, Main Road, Ferreirastown
(Behind John Voster Square)
Johannasburg, South Africa.
Tel: (011) 836-9531/9512
Fax: (011) 838-1900.
Web: <http://www.centralcash.co.za>
Email: ccr@global.co.za

All specifications are subject to change without notice.

©2005, CCR Inc.

Contents

Introduction	3
About the ER-380 PC Utility	3
Getting Started	5
Setting the ER-380 RS-232C Port.....	5
Preparing the ER-380 for Communications	7
Installing the Utility	7
Starting the PC Utility	8
Store Settings	9
Upload/Download Programs	11
UpProgram.....	11
DownProgram	12
Edit Programs	13
Procedures.....	13
Program Edit Screens.....	14
Reports	21
Poll Reports.....	21
View Reports.....	22
Prepare & Load Bitmap Logos	25
Preparing a Graphic Logo Bitmap for an ER-380.....	25
Download a Graphic Logo to an ER-380	26
Printing the Logo Image – ER-380 Settings.....	27
Appendix	29
Cabling Diagrams.....	29

Introduction

About the ER-380 PC Utility

The ER-380 Series PC Utility provides basic PC communication functions for Sam4s ER-380. This utility was designed primarily as a dealer tool - to save, edit, and download programs.

Note: The ER-380 Series PC Utility supports only direct onsite connection to the ECR. Modem communications are not supported.

The ER-380 Series PC Utility includes the following features:

- Multiple Stores
- Save and Load ECR programs
- Convert & Download Logo Bitmaps
- Edit ECR programs
- Poll and View Register Reports

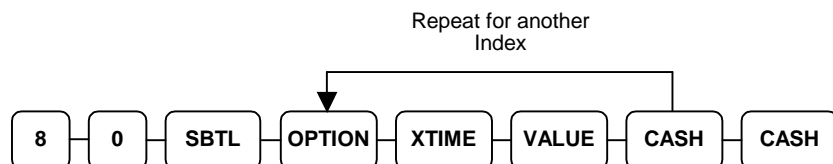
Note: The ER-380 Series PC Utility was developed to work best with a screen resolution of at least 1024 x 768 pixels.

Getting Started

Setting the ER-380 RS-232C Port

At the ER-380, you must select 'PC' as the device that is attached to the RS-232C communications port.

1. Turn the control lock to the **S** position.
2. Enter **8 0** and press the **SBTL** key.
3. Enter **5** and press the **X/TIME** key. (Refer to the RS-232C option chart that follows.)
4. Enter **1** (the value for PC) and press the **CASH** key.
5. Press **CASH** to exit the program.



RS-232 Option Chart

Address	Option	Value	Selection
1	Baud Rate	0	9600 BPS
		1	1200 BPS
		2	2400 BPS
		3	4800 BPS
		4	19200 BPS
2	Parity	0	NONE
		1	ODD
		2	EVEN
3	Data Bits	0	8 BITS
		1	7 BITS
4	Stop Bits	0	1 BIT
		1	2 BIT
5	Device Function	0	NONE
		1	PC
		2	SCALE
		4	Remote Printer
		5	Not used
		7	COIN
		9	Pole Display
6	Initial Feeding Line KP	0 - 20	
7	End Feeding Line KP	0 - 20	
8	Initial Feeding Line Slip	0 - 20	
9	Print Line On Guest Check	0 - 50	
10	Scale Type	0	NCI
		1	CAS
11	Printer Type	0	NONE
		1	SAMSUNG SRP-270
		2	SAMSUNG SRP-350
		3	SAMSUNG SRP-500
12	Display Type	0	ICD 2002
		1	

Preparing the ER-380 for Communications

The register must be ready for communications:

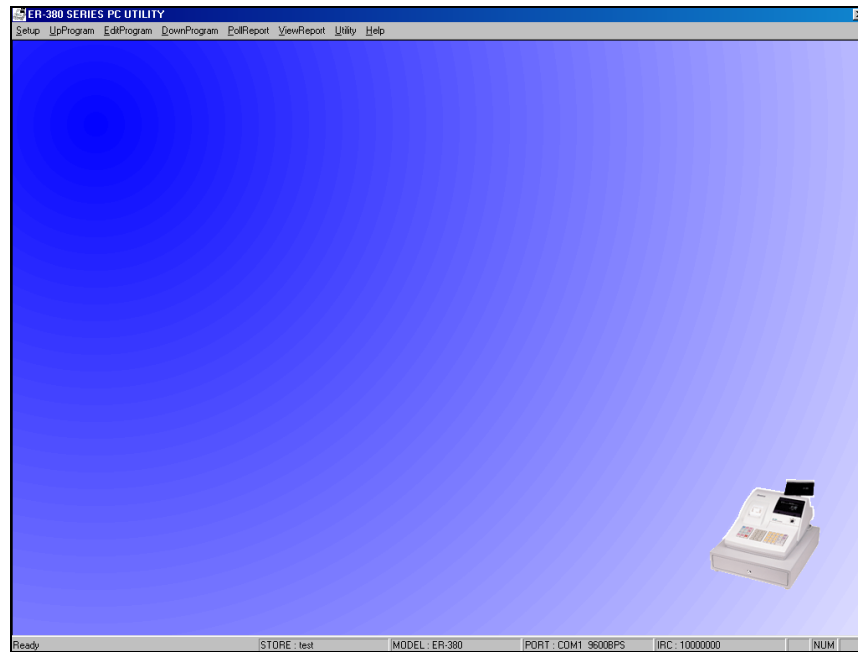
- Connect the register directly to the PC with the appropriate cable. See “Cabling Diagrams” on page 29.
- The register power must be on.
- A clerk must be signed on.
- The register cannot be inside of a transaction.
- The key lock can be in any position.

Installing the Utility

1. From Windows Explorer, locate the file: SETUP380.exe. Double click the file to open the installation dialog box.
2. Follow the instructions on the screen to complete the installation.

Starting the PC Utility

1. Choose **Start, Programs, SHC PC Utility** and then **ER-380 PC Utility**. The Store Setting dialog box displays.
2. Select the store you wish to open and click the **Close** button. The **ER-380 Series PC Utility** window opens. The current store is displayed at the bottom of the window.

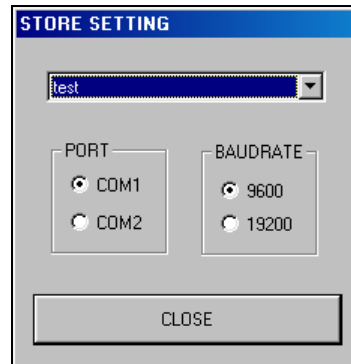


Current Store

Store Settings

There is no limit to the number of stores. When you start the utility for the first time, enter the store name and select the PC port and baud rate.

The Store Setting Dialog Box



Selecting a Store

- ◆ Select the working store when you start the utility.
- ◆ To change the working store after the utility has been started, choose **Setup Store** from the **Setup** menu and select a different store from the drop-down list box.

Adding a Store

- ◆ Choose **Add Store** from the **Setup** menu. At the **Add Store** dialog, enter the store name and click **OK**. At the **Store Setting** dialog, select the PC port, baud rate and click the **Close** button.

Removing a Store

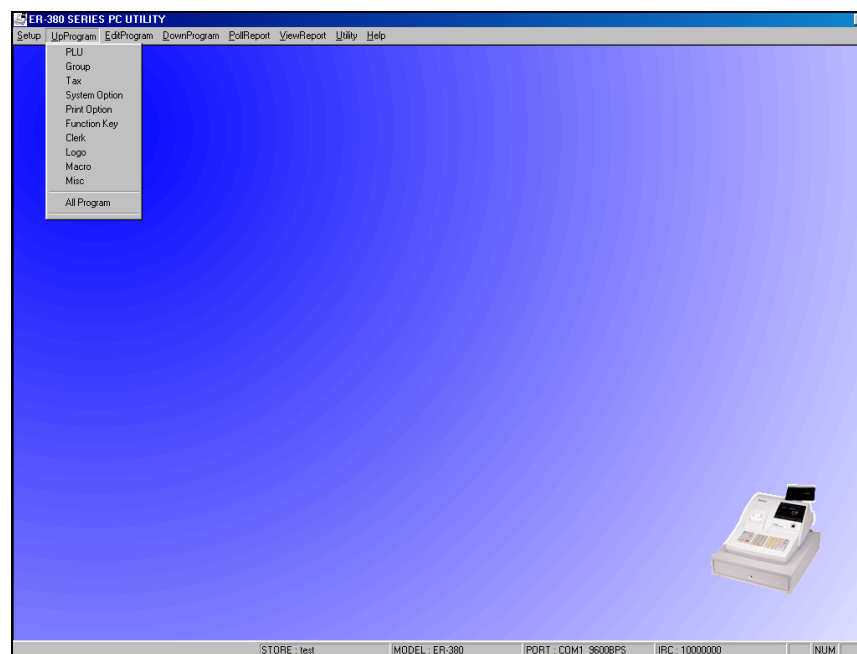
- ◆ Choose **Remove Store** from the **Setup** menu. At the **Remove Store** dialog, select the store name to remove and click **OK**.

Upload/Download Programs

UpProgram

You must upload a program before program edit functions are allowed.

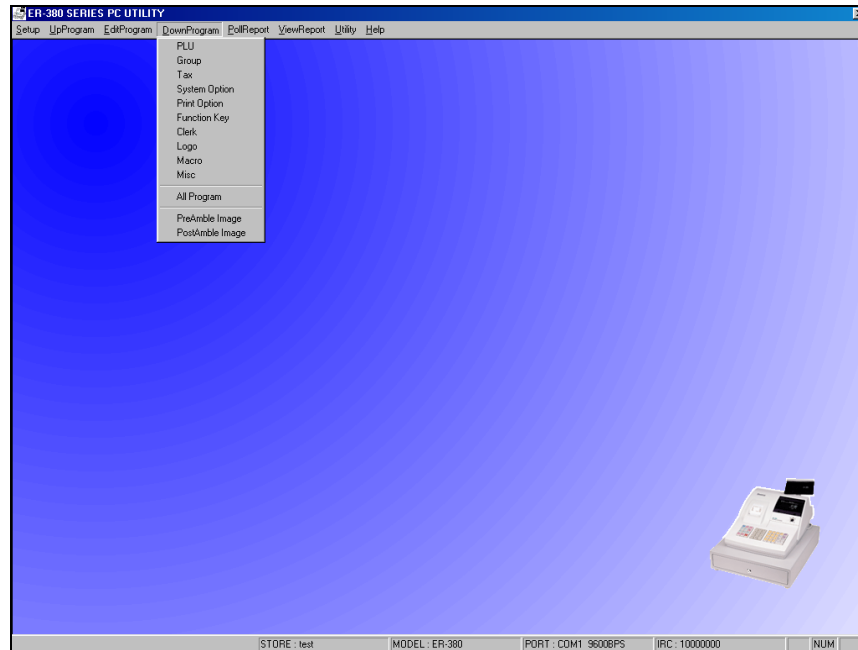
- ◆ Select the program segment you wish to upload from the **UpProgram** menu, or select **AllProgram** to upload the entire register program



DownProgram

Downloading a program will overwrite the existing register program.

- ◆ Select the program segment you wish to download from the **DownProgram** menu, or select **AllProgram** to download the entire register program (not including PreAmble and PostAmble images, that are downloaded separately.)



Edit Programs

Procedures

With the exception of memory allocation, all register programs can be edited with the PC Utility. You will find options neatly organized on dialog boxes, making register option programming on the PC Utility more efficient than programming options at the register.

▪ **You must upload a program before program edit functions are allowed.**

1. To edit a program, choose the appropriate program from the **EditProgram** menu. An example of each program dialog box is shown in this chapter.
2. After edits, click **Save** to exit and save changes, or click **Cancel** to exit without saving changes.

Tips

- Each Store's data, including both uploaded program files and polled report files, is located in a separate folder under the ER-380PC folder.
- If you are building a new register program based upon an existing store, you can copy an existing store's program files to a new store folder. It is often more efficient to modify an existing program than to start over with a new one.
- If you are building a large PLU file with identical (or similar) options for each PLU, you may find the from/to PLU programming at the register useful. For example, you can first program the identical options for a range of PLUs at the register. Then upload the PLU program with the utility. Use the utility to program descriptors, prices and make adjustments to each PLU individually. Finally, you can download the completed program to the register.
- If you have questions regarding the meaning of ECR features, refer the appropriate *ER-380 Program and Operation* manual for an explanation of your program options.

Program Edit Screens

PLU

PROGRAMMING PLU - Right click to delete an item.

CODE	DESCRIPTOR	PRICE
1	steak sand	6
2	EL POLLO LOC	1
3	Chicken sand	5
4	Grilled chee	2
5	chicken leg	1
6	Chicken Wing	4
7	Chicken&RIBS	15
8	Hamburger	3
9	Cheeseburger	4
10	FF's	1
11	Onion Rings	2
12	Mushrooms	4
13	Hot Dog	1

TOTAL PLU#: 13

PLU CODE:

DESCRIPTOR:

GROUP: 1 0 0

PRICE1:

PRESET ☒ PRESET OVERRIDE ☒

TAXABLE BY: ☐ 1 ☐ 2 ☐ 3 ☐ 4

FOOD STAMP ELIGIBLE ☐ NEGATIVE ITEM ☐

HASH ITEM ☐ SINGLE ITEM ☐

NON ADD # COMP. ☐ GALLONAGE ITEM ☐

SCALABLE ☐ DISABLE PROMO ☐

PRINT ON RECEIPT ☒ AUTO SCALE ☐

PRINT PRICE ON RECEIPT ☒ COUNTER NOT RESET ☐

PRESET OVERRIDE IN MGR MOD ☐ DISABLE ☐

LINK PLU CODE:

AUTO TARE: 0

SAVE & EXIT

SAVE & NEW

CANCEL

Groups

GROUP

#	DESCRIPTOR
1	GROUP 1
2	GROUP 2
3	GROUP 3
4	GROUP 4
5	GROUP 5
6	GROUP 6
7	GROUP 7
8	GROUP 8
9	GROUP 9
10	GROUP 10
11	GROUP 11
12	GROUP 12
13	GROUP 13
14	GROUP 14
15	GROUP 15
16	GROUP 16
17	GROUP 17
18	GROUP 18
19	GROUP 19
20	GROUP 20

GROUP 1

DESCRIPTOR: GROUP 1

☒ ADD TO GROUP TOTAL

☐ SEND TO KP

KP PORT:

☐ PORT#

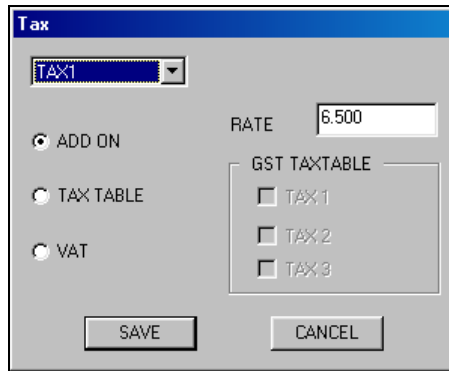
☐ RECEIPT

☐ PRINT RED ON KP

SAVE

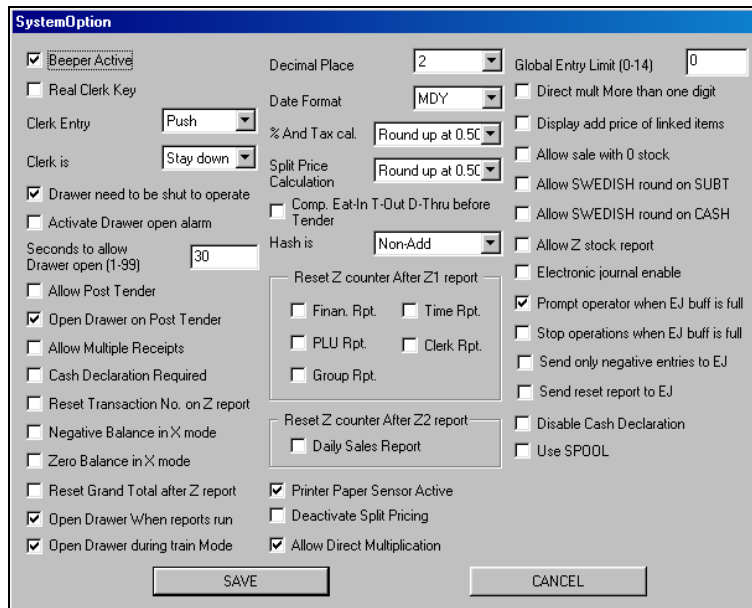
CANCEL

Tax



The Tax configuration dialog box features a title bar labeled 'Tax'. At the top left, there is a dropdown menu currently showing 'TAX1'. Below this, three radio buttons are arranged vertically: 'ADD ON' (which is selected), 'TAX TABLE', and 'VAT'. To the right of these buttons is a 'RATE' text field containing the value '6.500'. Further right is a section titled 'GST TAXTABLE' which contains three checkboxes labeled 'TAX1', 'TAX2', and 'TAX3', all of which are currently unchecked. At the bottom of the dialog are two buttons: 'SAVE' and 'CANCEL'.

System Option



The SystemOption configuration dialog box has a title bar labeled 'SystemOption'. It contains a large number of settings organized into several columns. The first column includes checkboxes for 'Beeper Active' (checked), 'Real Clerk Key', 'Clerk Entry' (set to 'Push'), 'Clerk is' (set to 'Stay down'), 'Drawer need to be shut to operate' (checked), 'Activate Drawer open alarm', 'Seconds to allow Drawer open (1-99)' (set to '30'), 'Allow Post Tender', 'Open Drawer on Post Tender' (checked), 'Allow Multiple Receipts', 'Cash Declaration Required', 'Reset Transaction No. on Z report', 'Negative Balance in X mode', 'Zero Balance in X mode', 'Reset Grand Total after Z report', 'Open Drawer When reports run' (checked), and 'Open Drawer during train Mode' (checked). The second column contains 'Decimal Place' (set to '2'), 'Date Format' (set to 'MDY'), '% And Tax cal.' (set to 'Round up at 0.50'), 'Split Price Calculation' (set to 'Round up at 0.50'), 'Comp. Eat-In T-Out D-Thru before Tender' (unchecked), 'Hash is' (set to 'Non-Add'), and two sections for 'Reset Z counter After Z1 report' and 'Reset Z counter After Z2 report', each with checkboxes for 'Finan. Rpt.', 'Time Rpt.', 'PLU Rpt.', 'Clerk Rpt.', and 'Group Rpt.'. The third column includes 'Global Entry Limit (0-14)' (set to '0'), 'Direct mult More than one digit' (unchecked), 'Display add price of linked items' (unchecked), 'Allow sale with 0 stock' (unchecked), 'Allow SWEDISH round on SUBT' (unchecked), 'Allow SWEDISH round on CASH' (unchecked), 'Allow Z stock report' (unchecked), 'Electronic journal enable' (unchecked), 'Prompt operator when EJ buff is full' (checked), 'Stop operations when EJ buff is full' (unchecked), 'Send only negative entries to EJ' (unchecked), 'Send reset report to EJ' (unchecked), 'Disable Cash Declaration' (unchecked), and 'Use SPOOL' (unchecked). At the bottom are 'SAVE' and 'CANCEL' buttons.

Print Option

PRINT OPTION

<input type="checkbox"/> Print Media Totals on Clerk Report	<input type="checkbox"/> Print Subtotal Without Tax	<input checked="" type="checkbox"/> Print Date
<input checked="" type="checkbox"/> Print Tax Symbol	Tax Amount Is <input type="text" value="ITEMIZE"/>	<input checked="" type="checkbox"/> Print Time
<input checked="" type="checkbox"/> Print VD Mode and Return on Rpt.	<input checked="" type="checkbox"/> Print Tax Amount	<input checked="" type="checkbox"/> Print Machine No.
<input type="checkbox"/> Print Audaction on Report	<input type="checkbox"/> Print Taxable total	<input checked="" type="checkbox"/> Print Clerk Name
<input type="checkbox"/> Print Plu report before Financial Report	<input type="checkbox"/> Print Tax % Rate	<input checked="" type="checkbox"/> Print Z Counter
<input checked="" type="checkbox"/> Skip Zero Totals on Financial Rpt.	<input type="checkbox"/> VAT Breakdown	<input checked="" type="checkbox"/> AVG Item / Cust
<input checked="" type="checkbox"/> Skip Zero Totals on Clerk Report	<input type="checkbox"/> Print Train mode title in Training Mode	<input checked="" type="checkbox"/> AVG \$ / Cust
<input type="checkbox"/> Print Clerk Report After Finan. Rpt.	Currency Symbol	<input type="checkbox"/> Buffer Receipt when receipt
<input type="checkbox"/> Print Sale Item No.	Conv # 1 <input type="text" value="1"/>	<input type="checkbox"/> Priority Print by Group on KP
<input type="checkbox"/> Print Plu sale item number	Conv # 2 <input type="text" value="1"/>	<input type="checkbox"/> Print PLU # on Receipt
<input type="checkbox"/> Print PLU with Zero Totals on Rpt.	Conv # 3 <input type="text" value="1"/>	<input type="checkbox"/> Not Print when Polling Reports
<input type="checkbox"/> Print Subtotal when pressed	Conv # 4 <input type="text" value="1"/>	<input type="checkbox"/> Print PLU # on PLU Reports
<input type="checkbox"/> Print % of sales on PLU Report	<input checked="" type="checkbox"/> Print KP Order # on Receipt	<input type="checkbox"/> Send Order to KP at Subtotal
<input checked="" type="checkbox"/> Print Consecutive No.	<input type="checkbox"/> Print Price on KP	on Receipt
Home Currency Symbol <input type="text" value="\$"/>	<input checked="" type="checkbox"/> Send to KP in VOID MODE	<input checked="" type="checkbox"/> Prn Preamble Graphic Logo
Grand Total Is <input type="text" value="GROSS"/>	<input type="checkbox"/> Send to KP in TRAIN MODE	<input checked="" type="checkbox"/> Prn Postamble Graphic Logo
Print Grand total	<input checked="" type="checkbox"/> Combine like Items on KP	Pre Graphic Logo <input type="text" value="USER"/>
<input checked="" type="checkbox"/> On X Report <input checked="" type="checkbox"/> On Z Report	<input checked="" type="checkbox"/> Print Receipt when Sign On/Off	Post Graphic Logo <input type="text" value="USER"/>
Print Gross total	Volume Unit <input type="text" value="GAL"/>	Edit Pre Feeding Line (0-9) <input type="text" value="0"/>
<input checked="" type="checkbox"/> On X Report <input checked="" type="checkbox"/> On Z Report	<input checked="" type="checkbox"/> Print Preamble Message on Receipt	Edit End Feeding Line (0-9) <input type="text" value="0"/>
	<input checked="" type="checkbox"/> Print Postamble Message on Receipt	

Function Key

FuncKey

Function Key

NOSALE

% 1

% 2

% 3

% 4

% 5

ADDCHK

CANCEL

CASH

CHARGE1

CHARGE2

CHARGE3

CHARGE4

CHARGE5

CHARGE6

CHARGE7

CHARGE8

CHARGE#

CHKCASH

CHECK

CONV1

CONV2

CONV3

CONV4

DVTHR

EATIN

ERRCORR

F/S SUB

F/S TEND

NOSALE

DESCRIPTOR 1

DESCRIPTOR 2

☐ KEY DISABLE ☐ UNDER MGR CONTRC

☐ INHIBIT NO SALE AFTER NON-ADD #

☐ ENFORCE# ENTRY AT START OF SALE

☒ PRINT ON N/S

☐ NON-ADD# PROHIBIT

☐ COMP. NON-ADD # MUST MATCH MAX DIGIT

MAX DIGIT (0 - 8)

Clerk

CLERK

#	DESCRIPTOR
1	CLERK 1
2	CLERK 2
3	CLERK 3
4	CLERK 4
5	CLERK 5
6	CLERK 6
7	CLERK 7
8	CLERK 8
9	CLERK 9
10	CLERK 10

CLERK 1

DESCRIPTOR

CLERK CODE

SAVE

CANCEL

Logo/Descriptors

LogoDesc

PREAMBLE

1

2

3

4

6

7

POSTAMBLE

1

2

3

5

6

7

ENDORSEMENT MESG

SAVE

CANCEL

NLU

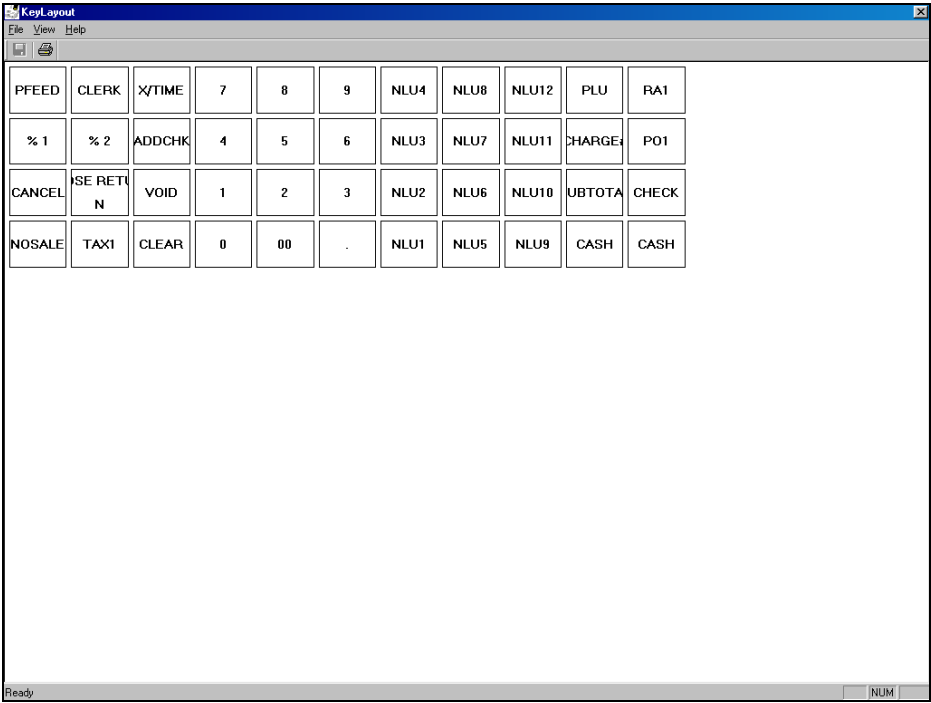
[illegible]

Macro

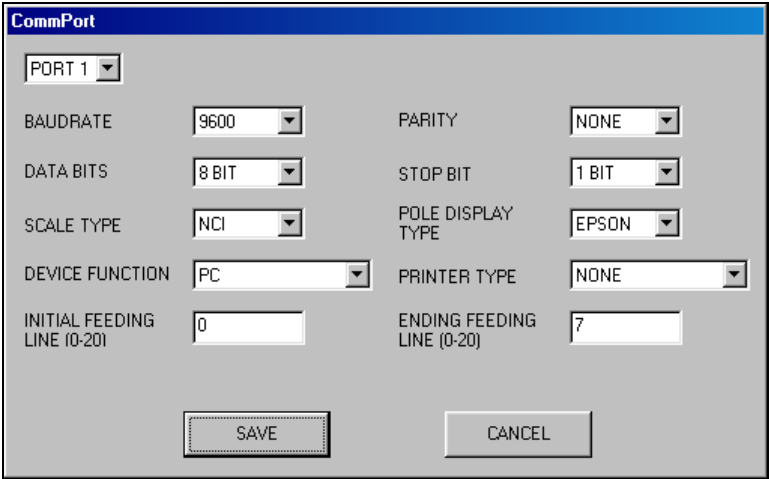
Macro 1 : MACRO1										
PFEED	CLERK	X/TIME	7	8	9	NLU4	NLU8	NLU12	PLU	RA1
%1	%2	ADDCHEK	4	5	6	NLU3	NLU7	NLU11	CHARGE#	P01
CANCEL	ADSE RETURN	VOID	1	2	3	NLU2	NLU6	NLU10	SUBTOTAL	CHECK
NOSAILE	CONV1	CLEAR	0	00	.	NLU1	NLU5	NLU9	CASH	CASH

Key Layout

Note: To see the entire keyboard on the screen, the screen resolution must be set to 1024 x 768 pixels.



Comm Port



Etc. – Tare/Drawer Limit/Change Limit/Machine Number

Etc

TARE WEIGHT		DRAWER LIMIT	0.00
0.100		CHECK CHANGE LIMIT	0.00
0.200		MACHINE NUMBER	12345
0.300		TRAINING MODE PASSWORD	0
0.400			
0.500			

SAVE CANCEL

Scan Data

SELECT PROGRAM

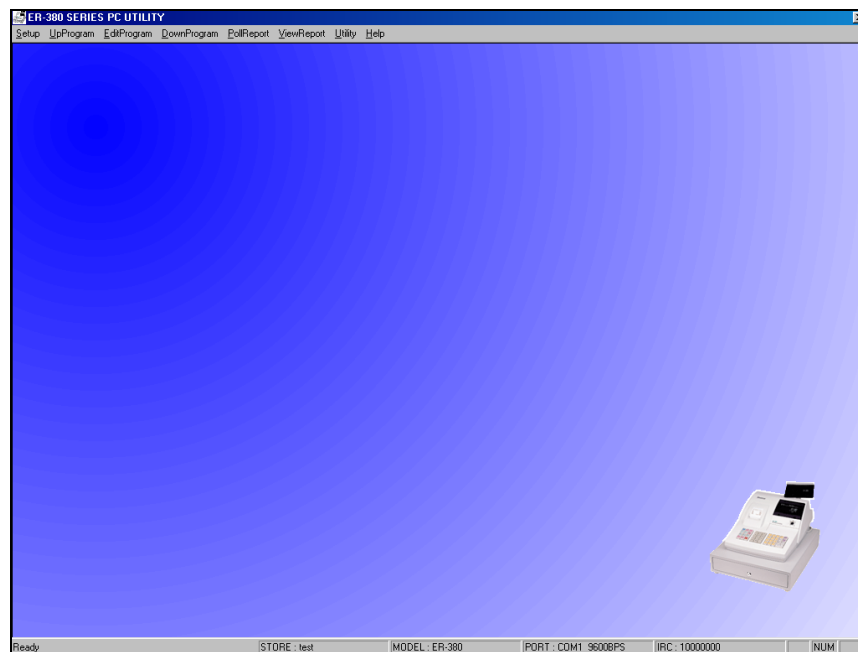
PLU	GROUP
TAX	SYSTEM OPTION
PRINT OPTION	FUNCTION KEY
CLERK	LOGO & DESCRIPTOR
MACRO	NLU
ETC(TARE...)	PORT

CANCEL

Reports

Poll Reports

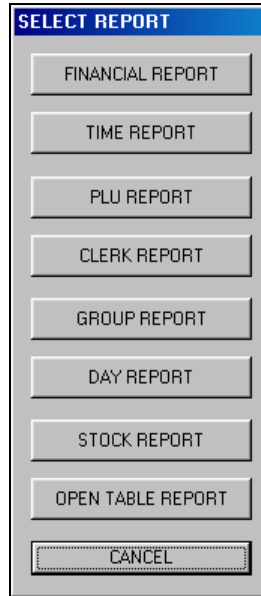
- ♦ Select the report you wish to poll from the **PollReport** menu, or select **AllReport** to upload all reports.



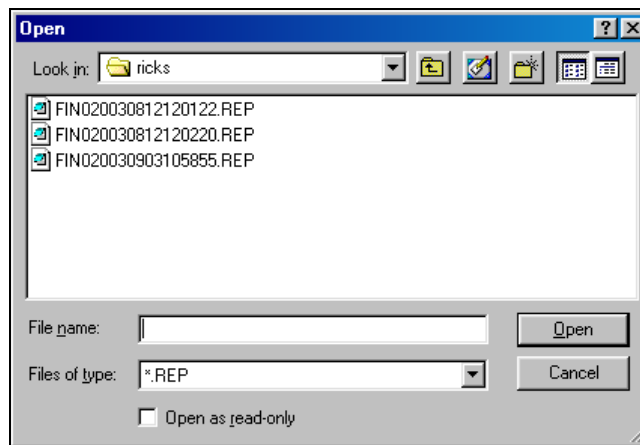
View Reports

Note: Polled report can only be viewed with the built-in viewer. Report files are not ASCII format, nor can they be converted to ASCII format with this utility

1. Select the Individual Report from the ViewReport menu.



2. Click the button that represents the report you wish to view.



3. Select the report you wish to view and click **Open**.

Click to display the report without totals that have zero values

Click to view the next page of the report.

FINANCIAL REPORT		
DESCRIPTION	COUNT	TOTAL
+PLU TTL	80.00	300.78
-PLU TTL	0.00	0.00
ADJUST TTL	80.00	300.78
NONTAX	2	8.38
TAX1 SALES	0	289.45
TAX2 SALES	0	289.45
TAX3 SALES	0	286.45
TAX4 SALES	0	292.40
TAX1	0	18.74
TAX2	0	17.50
TAX3	0	17.32
TAX4	0	17.68
XMP11 SALES	0	0.00
XMP12 SALES	0	0.00
XMP13 SALES	0	0.00
XMP14 SALES	0	0.00
EATIN TTL	0	0.00
TAKEOUT TTL	0	0.00
DRTHRU TTL	0	0.00
% 1	0	0.00
% 2	0	0.00
% 3	0	0.00
% 4	0	0.00
% 5	0	0.00
NET SALE	50	372.02
CREDIT TAX1	0	0.00
CREDIT TAX2	0	0.00
CREDIT TAX3	0	0.00
CREDIT TAX4	0	0.00
FD/S CREDIT	0	0.00

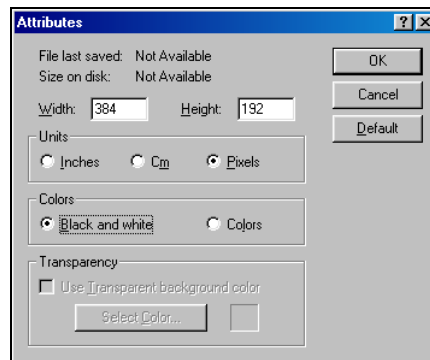
4. Use the scroll bar or the arrow buttons to view the report

Prepare & Load Bitmap Logos

Preparing a Graphic Logo Bitmap for an ER-380

The image must be black/white, 384 x 192 pixels, and 10 Kbytes or less in size.

1. Open MS Paint.
2. Open the image file you wish to use.
3. Choose **Attributes** from the **Image** menu. The **Attributes** dialog box displays.

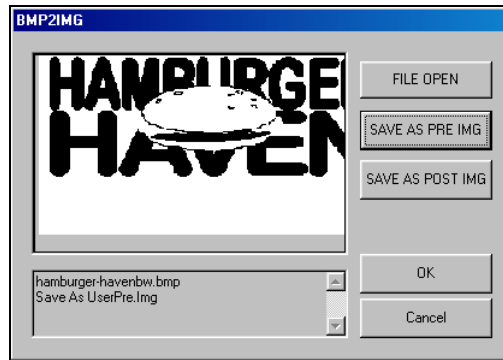


4. The image dimensions must be no larger than 384 pixels wide by 192 pixels high. If the image size in pixels is greater than the maximum, you must resize your image.
 - a. Click **OK** to exit the Attributes dialog.
 - b. Select your image. (Choose **Select All** from the **Edit** menu.)
 - c. Using the handles of the selected image, resize the image. Keep the image in the upper left corner of the screen.
 - d. Choose **Attributes** from the **Image** menu. The **Attributes** dialog box displays again. Enter 384 in the **Width** field; enter 192 in the **Height** field; select **Pixels** as the unit. Click **OK** to exit the dialog box.

- e. Your image will be cropped to the 384 x 192 pixel size. If you cropped part of the image you wish to keep, you can undo (Ctrl + Z) and try again. You may have to experiment a bit to resize the image inside the 384 x 192 pixel limit.
5. After the image is sized, select **Black and white** in the **Attributes** dialog.
6. Save your image as type “Monochrome Bitmap (*.bmp,*.dib)” and confirm that the size is 10k or less.

Download a Graphic Logo to an ER-380

1. Install the *ER-380 PC Utility* on your PC.
2. At the ER-380, set the RS-232C option address #5 to a value of 1 (PC).
(S position; 80 SBTL; 5 X/TIME; 1 CASH; CASH)
3. Return key lock to **REG** and sign on a clerk.
4. Connect the PC to the ER-380 using one of the following cables:
CCR Part # 522035 (Register DB-9M to PC DB-9F)
CCR Part # 522038 (Register DB-9M to PC DB-25F)
5. At your PC, start the ER-380 PC Utility. (Select **Start, Programs, SHC PC UTILITY, ER-380 PC UTILITY.**) The **Store Setting** dialog box displays.
6. If you are starting the ER-380 PC Utility for the first time, you must define a store name, or if a store is already defined, you can select the store from the drop down list. After the store is defined or selected, click **Close**. The PC Utility program starts.
7. Move the .bmp logos you wish to use into the store directory (i.e. C:/ER-380PC/storename.)
8. At the PC Utility, choose **Convert Logo Image** from the **Utility** menu. The Bmp dialog box displays.
9. Click **FILE OPEN**. Select the bitmap image you wish to use from the **Open** dialog and click the **Open** command button.
10. Click the **SAVE AS PRE IMG** or **SAVE AS POST IMG** button.



11. When the image is selected, click **OK**. Verify that the message “Save As UserPre.img” or “Save As UserPost.img” displays. If the file is too large, and cannot be loaded, the message “File Size Error” display.
12. Choose **PreAmble Image** or **PostAmble Image** from the **DownProgram** menu.
13. The screen will track the progress of the download. When complete, the **COMM COMPLETED** message will display, click **OK**.

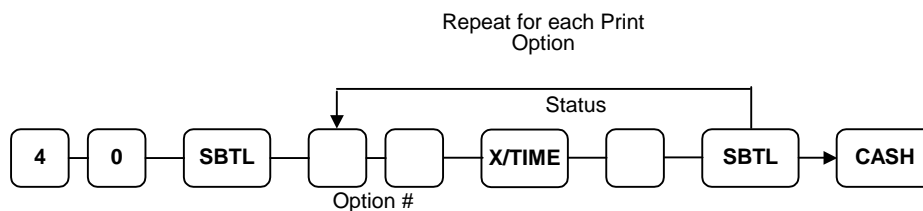
Printing the Logo Image – ER-380 Settings

Two addresses in Print Option Programming affect graphic logo printing:

Option #28 – Add the value of 1 to address 28 if you wish to print the pre graphic logo on the receipt. Add the value of 2 to address 28 if you wish to print the post graphic logo on the receipt.

Option #30 – Add the value of 1 to address 30 if you wish to print your custom bitmap instead of the default bitmap “Thank You – Your Receipt”. Add the value of 2 to address 30 if you wish to print your custom bitmap instead of the default bitmap “Call Again”.

Print Option Flowchart (P Key Lock Position)



Appendix

Cabling Diagrams

You can configure cables yourself with the diagram provided here, or you can order the appropriate cables from CCR Parts at +27 11 836 9512 .

Direct Connection

Sam4s DB-9M	PC DB-9F
DCD1	1DCD
RXD2	2RXD
TXD3	3TXD
DTR4	4DTR
GND5	5GND
DSR6	6DSR
RTS7	7RTS
CTS8	8CTS
VCC9	9RI

Sam4s DB-9M	PC DB-25F
DCD1	1ChGND
RXD2	2TXD
TXD3	3RXD
DTR4	4RTS
GND5	5CTS
DSR6	6DSR
RTS7	7GND
CTS8	8DCD
VCC9	20DTR

